

Review

Tol2: a versatile gene transfer vector in vertebrates

Koichi Kawakami

Division of Molecular and Developmental Biology, National Institute of Genetics, and Department of Genetics, The Graduate University of Advanced Studies (SOKENDAI), Mishima, Shizuoka 411-8540, Japan

Correspondence: Koichi Kawakami. E-mail: kokawaka@lab.nig.ac.jp

Published: 31 October 2007

Genome Biology 2007, **8(Suppl 1)**:S7 (doi:10.1186/gb-2007-8-S1-S7)

The electronic version of this article is the complete one and can be found online at <http://genomebiology.com/2007/8/S1/S7>

© 2007 BioMed Central Ltd

Abstract

The medaka fish *Tol2* element is an autonomous transposon that encodes a fully functional transposase. The transposase protein can catalyze transposition of a transposon construct that has 200 and 150 base pairs of DNA from the left and right ends of the *Tol2* sequence, respectively. These sequences contain essential terminal inverted repeats and subterminal sequences. DNA inserts of fairly large sizes (as large as 11 kilobases) can be cloned between these sequences without reducing transpositional activity. The *Tol2* transposon system has been shown to be active in all vertebrate cells tested thus far, including zebrafish, *Xenopus*, chicken, mouse, and human. In this review I describe and discuss how the *Tol2* transposon is being applied to transgenic studies in these vertebrates, and possible future applications.

Introduction

The *Tol2* element was identified from the genome of the medaka fish (*Oryzias latipes*), a small fresh water teleost. The sequence of *Tol2* is similar to those of transposons belonging to the hAT family, namely *hobo*, *Ac* and *Tam3* [1]. Although vertebrate genomes contain a large number of sequences related to DNA transposons, including those similar to the hAT family transposons, none of these has been shown to be naturally active, and all are thought to be non-autonomous elements. In an exception, the *Tol2* element was found to be autonomously active [2]. The autonomous *Tol2* element is about 4.7 kilobases (kb) in length and contains a gene encoding a transposase protein, which consists of four exons (Figure 1) [3]. mRNA transcribed from the gene has the capacity to synthesize a protein of length 649 amino acids, and the transposase protein is fully functional and can catalyze transposition of a non-autonomous *Tol2* construct (a construct containing a deletion in the transposase coding region but retaining the *Tol2* ends) [3,4]. *Tol2* integrates as a single copy through a cut-and-paste mechanism, and it does not cause any rearrangement or modification at the target site except for the creation of an 8 base pair (bp) duplication. Therefore, 8 bp direct repeats are always seen adjacent to integrated *Tol2* elements [4].

The minimal *Tol2* vector and its capacity

Minimal *Tol2 cis* sequences necessary for transposition were recently studied [5,6]. Transposon constructs containing 200 bp and 150 bp of DNA from the left and right ends, respectively, could transpose, but constructs containing less than 150 bp and 100 bp of DNA from left and right ends did not [5]. Thus, the 200 bp and 150 bp sequences, which contain 12 bp terminal inverted repeats and subterminal regions, are sufficient for transposition (Figure 1). Theoretically, any foreign DNA fragments can be cloned between these sequences. What, then, is the maximum size of DNA that can be carried by the *Tol2* vector? At present, we know that the *Tol2* vector can carry a DNA insert as large as 11 kb between the ends without reducing its transpositional activity [5]. Thus, the *Tol2* transposon vector has the potential to carry fairly large DNA inserts, in comparison with the possible size limitation observed in a *Tc1/mariner*-type transposon [7].

***Tol2* in zebrafish: germline transgenesis**

Zebrafish is an excellent model animal in which to study vertebrate development using genetic approaches. Transgenesis is an important means to study the function of genes

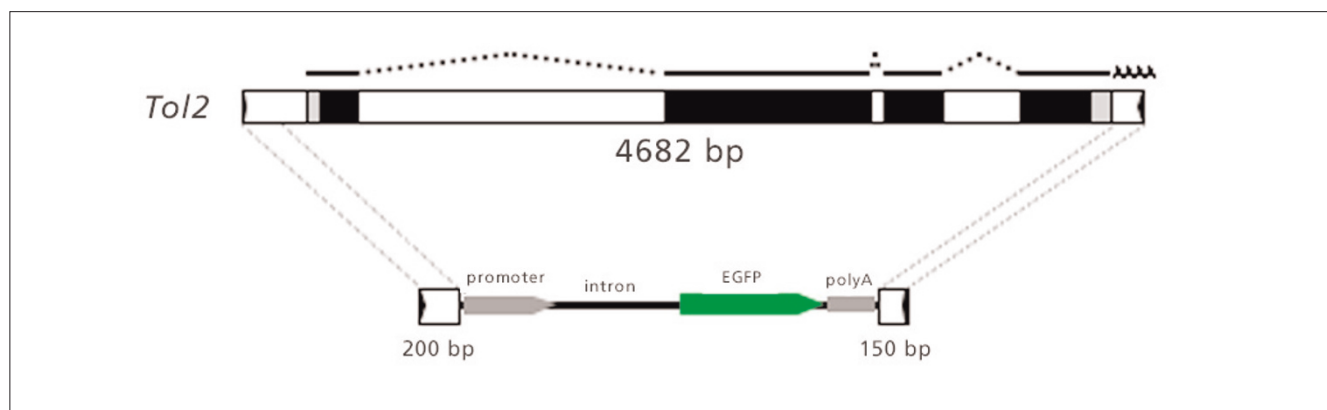


Figure 1

The structures of the *Tol2* transposable element and the minimal *Tol2* vector. At the top of the illustration is the 4,682 base pair (bp), full-length *Tol2*. RNA transcribed from *Tol2* that encodes a transposase protein [3] is shown by lines (exons) and dotted lines (introns). Black boxes and gray boxes represent coding regions and untranslated regions, respectively. Black arrowheads in boxes at both ends indicate 12 bp terminal inverted repeats (TIRs). The lower portion of the figure shows the minimal *Tol2* vector with the green fluorescent protein (GFP) expression cassette. The minimal *Tol2* vector contains 200 and 150 bp of DNA from the left and right ends, which include TIRs (black arrows) and subterminal regions (open boxes) [5]. The transposon vector can carry a DNA fragment, for example the GFP expression cassette in this figure, between these sequences.

in vivo, and methods to create transgenic zebrafish have been developed. First, a plasmid DNA injected into fertilized eggs is integrated into the genome and is then transmitted through the germ lineage [8]. This method has been applied to create transgenic fish that express green fluorescent protein (GFP) in specific tissues and organs [9-11]. However, the frequency of germline transmission of the injected DNA has been low (only about 5% of the injected fish can produce transgenic offspring). Second, a pseudotyped retrovirus injected into blastula-stage embryos generates chromosomal integration of its cDNA, and the proviral insertion is transmitted to the F_1 offspring [12]. With this method, about 100% of injected fish can become germline transmitting founder fish, and therefore a large number of proviral insertions can be created very efficiently [13]. However, the handling and modifying of retroviral vectors is laborious, making it difficult for some laboratories to establish the transgenesis method using the pseudotyped retrovirus.

In the light of these limitations, the transgenesis method using *Tol2* was developed. In this method, first a transposon-donor plasmid and synthetic mRNA encoding the transposase are introduced into fertilized eggs by microinjection. Then, the transposase protein is translated from the injected mRNA and catalyzes excision of the transposon construct from the donor plasmid, leading to stable integration of the excised DNA in the genome (Figure 2). The injected mRNA and the transposase protein gradually degrade, and, after transposase activity has ended, the *Tol2* insertions become stable. It may be possible that the transposon construct hops around until the transposase activity disappears, although such events have not been detected. The integration events occur during early stages of

embryonic development, and some occur in cells that give rise to the germ cells. By outcrossing the injected fish, germline transmission of *Tol2* insertions can be selected in the F_1 generation (Figure 2) [4]. On average, transgenic F_1 offspring are obtained from 50% to 70% of the injected fish, at frequencies of 3% to 100% [5,14]. These frequencies are significantly greater than those observed with transgenesis by plasmid microinjection.

Although the frequencies are lower than those with retroviral vectors (nearly 100% of the injected fish can transmit proviral insertions to F_1), the *Tol2* transposon system has advantages over the pseudotyped retrovirus system because it is much easier to handle and manipulate *Tol2* constructs. This is illustrated by several recent developmental studies in which *Tol2*-mediated transgenesis has been successfully applied. For instance, the zebrafish red-light blind mutation *pob* (partial optokinetics response b) was rescued by stable transgenic expression of the wild-type *pob* cDNA under the control of the $EF1\alpha$ promoter [15]. Also, *gfp* was expressed in melanophores by using the Fugu *tyrp1* (tyrosinase-related protein 1) promoter [16], in primordial germ cells by using the *askopos* gene promoter and the *nanos1* 3'-untranslated region element [17], and in oocytes to study the *cis*-acting element that controls RNA localization [18]. Finally, the *fezl* gene was expressed under the control of heat-inducible Gal4 and the GAL4 responsive UAS sequence to study forebrain development [19]. These studies reveal that *Tol2* transposon insertions can mediate reliable gene expression under control of a variety of regulatory elements in transgenic fish. Importantly, expression from the transgene persists through generations, suggesting that transgenes created by *Tol2*-mediated transgenesis may not suffer from gene silencing effects.

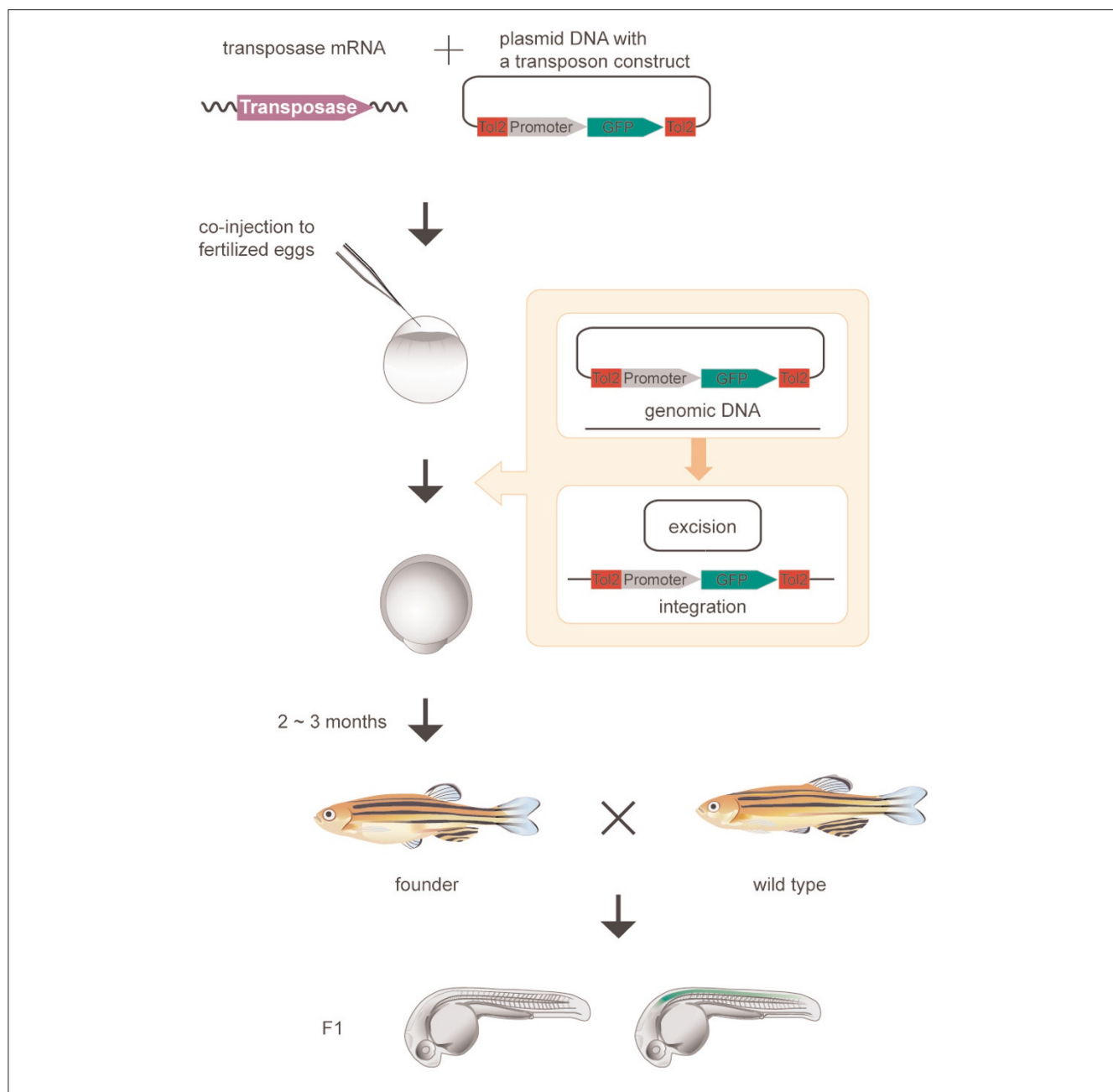


Figure 2
 Transgenesis in zebrafish. The synthetic transposase mRNA and a transposon donor plasmid containing a *ToI2* construct with a promoter and the gene encoding green fluorescent protein (GFP) are co-injected into zebrafish fertilized eggs. The *ToI2* construct is excised from the donor plasmid [2] and integrated into the genome. *ToI2* insertions created in germ cells are transmitted to the F₁ generation. Germ cells of the injected fish are mosaic, and, by crossing the injected fish (founder) with wild-type fish, nontransgenic fish and transgenic fish heterozygous for the *ToI2* insertion are obtained [4]. In this figure, the promoter is tentatively defined as a spinal cord specific enhancer/promoter and the spinal cord of the embryo is depicted in green.

Furthermore, gene trap and enhancer trap methods have been developed by using the *ToI2* transposon system in zebrafish [14,20,21]. These approaches require creation of a large number of insertions of a gene or an enhancer trap construct, and were made possible by key properties of *ToI2*, namely the high efficiency of germline transmission

and the ease of handling and manipulation. Thus, the *ToI2* transposon system should facilitate functional analyses of cells and genes during development. It can be expected that the *ToI2* transposon system will be applied to large-scale insertional mutagenesis. To establish whether this is feasible, it will be necessary to determine how efficiently

Tol2 insertions can disrupt the function of zebrafish genes.

Tol2 in zebrafish: transient expression assay

When DNA is injected into zebrafish fertilized eggs, the injected DNA is unequally distributed in the embryo and, in most cases, is not integrated in the genome, remaining as extra-chromosomal DNA [8]. It was observed that embryos that are injected with a plasmid DNA containing *gfp* under the control of a ubiquitous promoter exhibit transient expression only in a small number of cells [9]. In contrast, when the same GFP expression cassette was cloned in a *Tol2* transposon vector and injected into fertilized eggs with the transposase mRNA, GFP was expressed ubiquitously throughout the body [14]. The explanation of this observation is that the transposon was integrated in the genome during early stages of embryonic development in many cells through transposition. In this context, it is predicted that if a cell-type specific enhancer/promoter were to be placed upstream of *gfp* on a *Tol2* construct, then GFP should be expressed in a cell-type specific manner in the injected F_0 embryos, following the cell specificity of the cloned enhancer/promoter.

One important application of *Tol2*-mediated transient expression is functional analyses of noncoding sequences and *cis*-regulatory elements in the vertebrate genome. Although it is important to understand the roles played by *cis* elements in gene regulation and disease, no cost-effective method to conduct large-scale analysis has been developed. Using a *Tol2* transposon construct containing a minimal *c-fos* promoter and the *gfp* gene, the potential regulatory activity of genomic DNA fragments has been examined by cloning them upstream of the *c-fos* promoter. The transposon construct and the transposase mRNA were co-injected into one-cell stage embryos, and GFP expression was analyzed in the injected F_0 embryos. It has been shown that this transient expression assay is useful in detecting chromosomal enhancer activities (Figure 3) [22]. Because this method can rapidly detect activities of noncoding genomic DNA fragments, it was applied to the identification of discrete enhancer elements in the zebrafish and human *RET* genomic regions [23]. However, it remains to be determined whether this transient expression assay can be applied to detection of enhancer activities that direct gene expression in any cell type, for instance very limited and specific cell types such as specific neurons.

Tol2 in frog

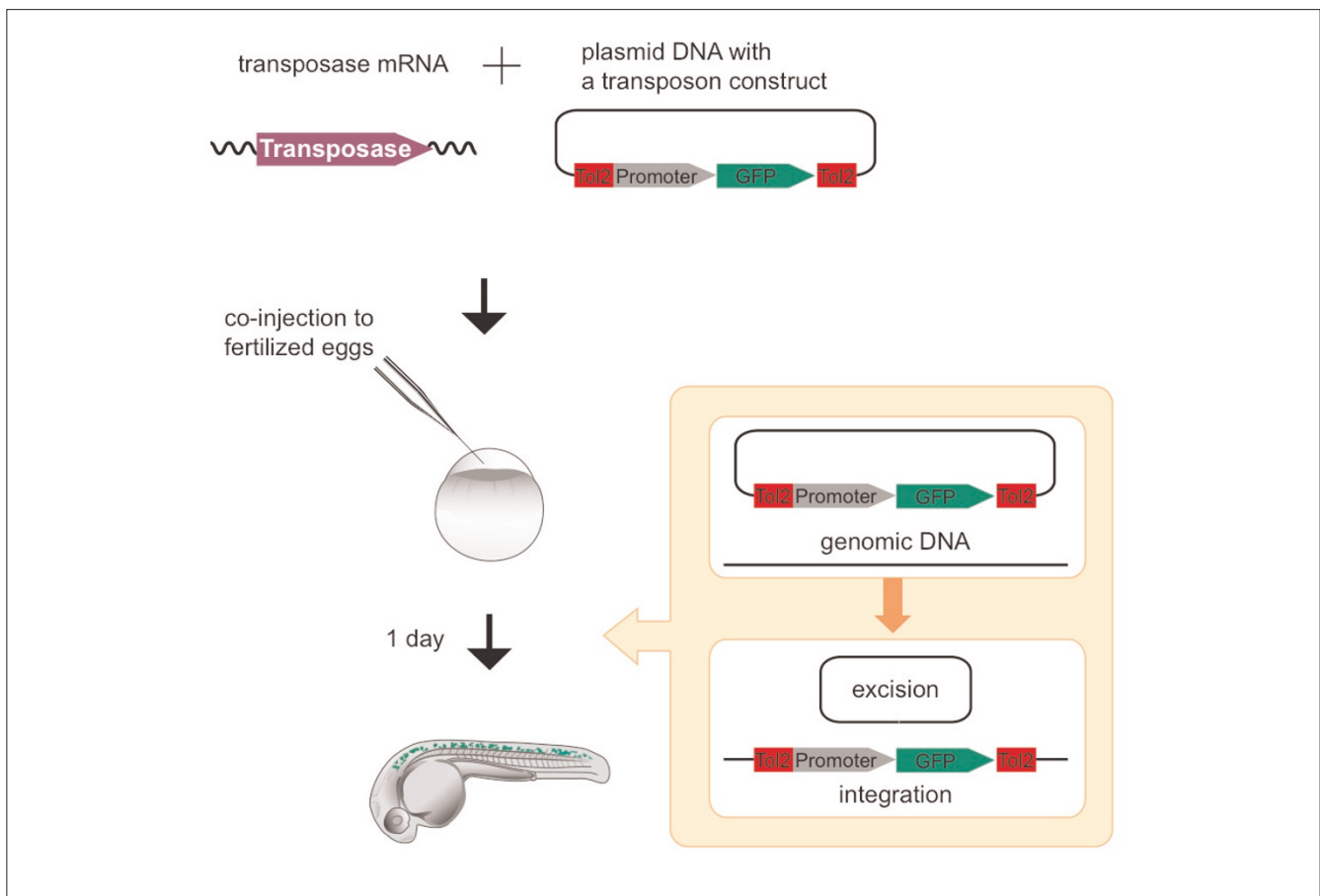
Xenopus laevis has been a useful model animal in developmental biology. Recently, *Xenopus tropicalis*, a relative of *X. laevis*, is becoming an important model frog. It is amenable for use in genetic studies because of its unique features in comparison with *X. laevis*, specifically its diploid

genome, smaller body size, and shorter generation time. Transgenic *X. tropicalis* have been constructed based on the restriction enzyme-mediated integration technique, which requires careful treatments of eggs and sperm [24].

To develop an alternative and simpler method for creating transgenic *X. tropicalis*, the activity of the *Tol2* transposon system was tested in *Xenopus*. First, both a *Tol2* transposon-donor plasmid and the transposase mRNA were introduced into two-cell stage *X. tropicalis* and *X. laevis* embryos by microinjection. The transposon construct was excised from the donor plasmid, indicating that the *Tol2* transposon system is active in these *Xenopus* spp. [25]. Second, a donor plasmid that harbored a *Tol2* construct containing the GFP expression cassette was co-injected with the transposase mRNA into one-cell stage *X. tropicalis* embryos, and GFP-positive F_0 frogs (30% to 40% of the injected embryos) were raised to adulthood. GFP-positive F_1 progeny were produced by 30% to 40% of such F_0 adults, indicating that the *Tol2* transposon system can be used for transgenesis in *Xenopus* (Figure 4) [26]. However, the germline transmission frequency is still lower than frequencies in zebrafish transgenesis, in which more than 50% of injected F_0 fish constantly transmit transposon insertions to the F_1 generation, even without pre-screening of the F_0 injected fish for GFP positives. Therefore, in *Xenopus* improvement in transgenic frequency will be important in making the *Tol2* transposon system a more powerful genetic tool.

Tol2 in chicken

The chicken has been used as a model system to study vertebrate development mainly because of the ease of manipulation of the embryo. To facilitate functional study of cloned genes in chicken embryos, a method to introduce a foreign DNA into the embryo by electroporation has been developed [27]. Although this method allows ectopic expression of the introduced gene in a restricted region of the embryo, its expression is transient and therefore analyses are restricted to phenomena that occur during early stages of embryonic development. To circumvent this problem, the *Tol2* transposon system was recently applied to the chicken system. A plasmid DNA harboring a *Tol2* construct with the GFP expression cassette and a helper plasmid containing the transposase gene under the control of a ubiquitous promoter (CAGGS in Figure 5) are co-electroporated in chicken embryos. The *Tol2* construct is integrated into the genome soon after electroporation. As a consequence GFP is continuously expressed in cells that harbor the construct in the genome, and sustained GFP expression is observable until late developmental stages (Figure 5) [28]. Chromosomal transposition of *Tol2* in chicken was confirmed by Southern blot hybridization using the chicken culture cells [28]. Thus, the *Tol2*-mediated gene transfer method should be useful in studying the roles played by genes that are involved in late organogenesis in

**Figure 3**

Transient expression assay in zebrafish. The synthetic transposase mRNA and a transposon donor plasmid containing a *Tol2* construct with the tentative spinal cord specific enhancer/promoter (Figure 2) and the gene encoding green fluorescent protein (GFP) are co-injected into zebrafish fertilized eggs. The *Tol2* construct is excised from the donor plasmid and integrated into the genome of somatic cells. The activity of the enhancer can be visualized in the injected embryo, because GFP is expressed predominantly in a region where the enhancer/promoter should activate transcription [22].

chicken. This method was successfully applied to express a dominant-negative form of cadherin in the horizontal cells in the retina and to identify an essential role played by cadherin in dendritic morphogenesis [29].

Germline transgenesis in chickens and quails has been performed using retroviral vectors [30] and the *mariner* transposable element [31]. Although creating transgenic chickens and quails is of great importance to developmental biology and for pharmaceutical purposes, transgenesis methods in avian species have not been well established relative to other model vertebrates [32]. The *Tol2* transposon system may become a useful tool with which to create stable germline transgenic chickens and quails as well.

***Tol2* in mammals**

When a transposon-donor plasmid harboring a *Tol2* construct with the neomycin resistance gene is introduced into mouse embryonic stem cells with a helper plasmid

containing the transposase cDNA under the control of a strong promoter (CAGGS in Figure 6) by electroporation, the *Tol2* construct transposed from the donor plasmid to the genome and neomycin-resistant colonies is formed (Figure 6) [33]. In this experiment, the number of neomycin-resistant colonies was increased proportionally to the amount of the helper plasmid expressing the transposase, indicating that the transposase can enhance transposition in a dose-dependent manner [33]. This is in contrast to transposons of the *mariner* family, including *Sleeping Beauty* (SB), in which a phenomenon termed over-production inhibition (the transpositional activity is reduced in the presence of an excess amount of transposase) has been observed [34,35]. Proportional increase in transpositional activity of *Tol2* was observed in other co-transfection experiments using human cells [6,36]. However, it is uncertain whether the *Tol2* transposon system is perfectly free from over-production inhibition, because conditions used in the previous studies are still limited and it is possible that the amount of transposase did not reach the

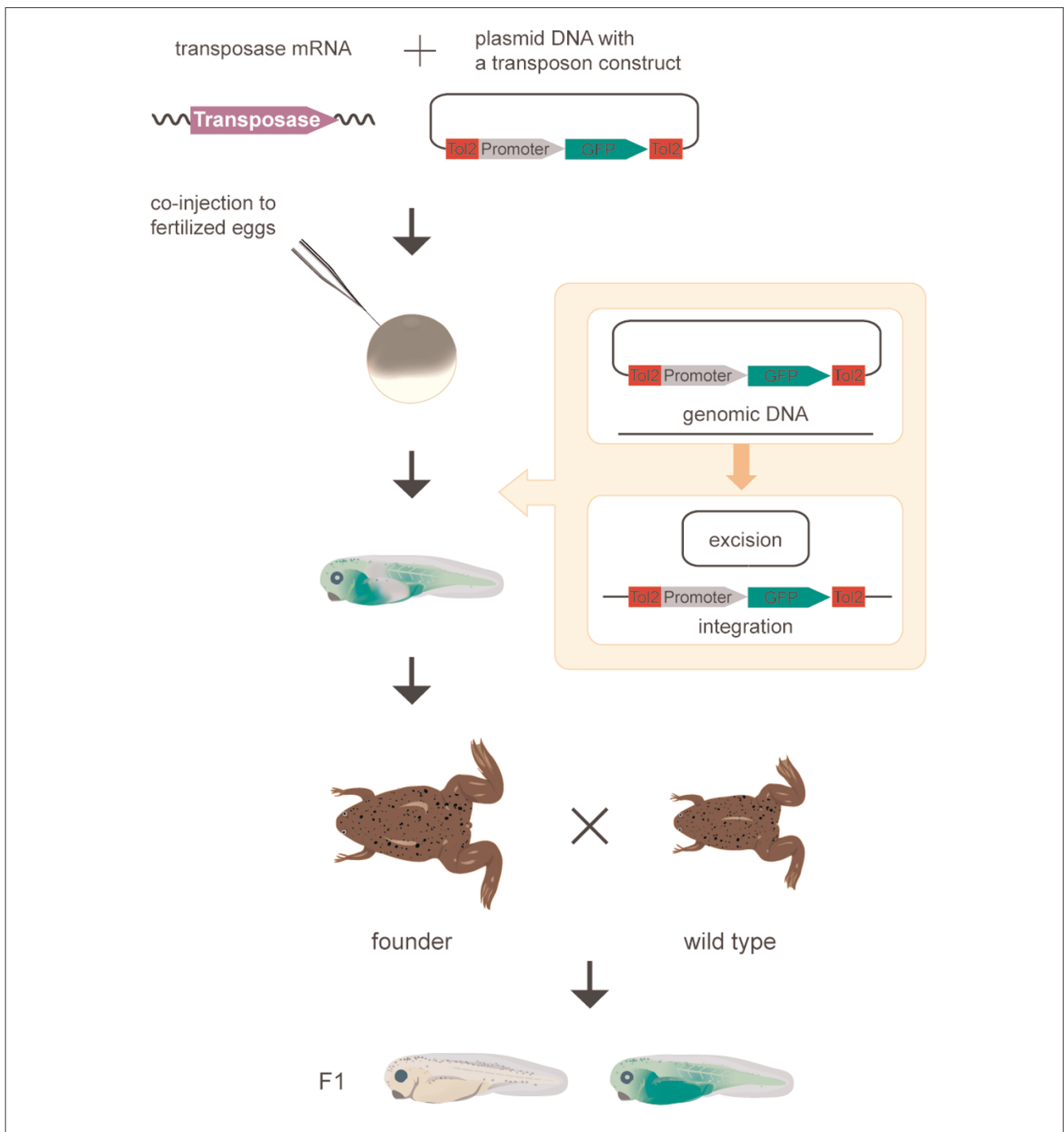
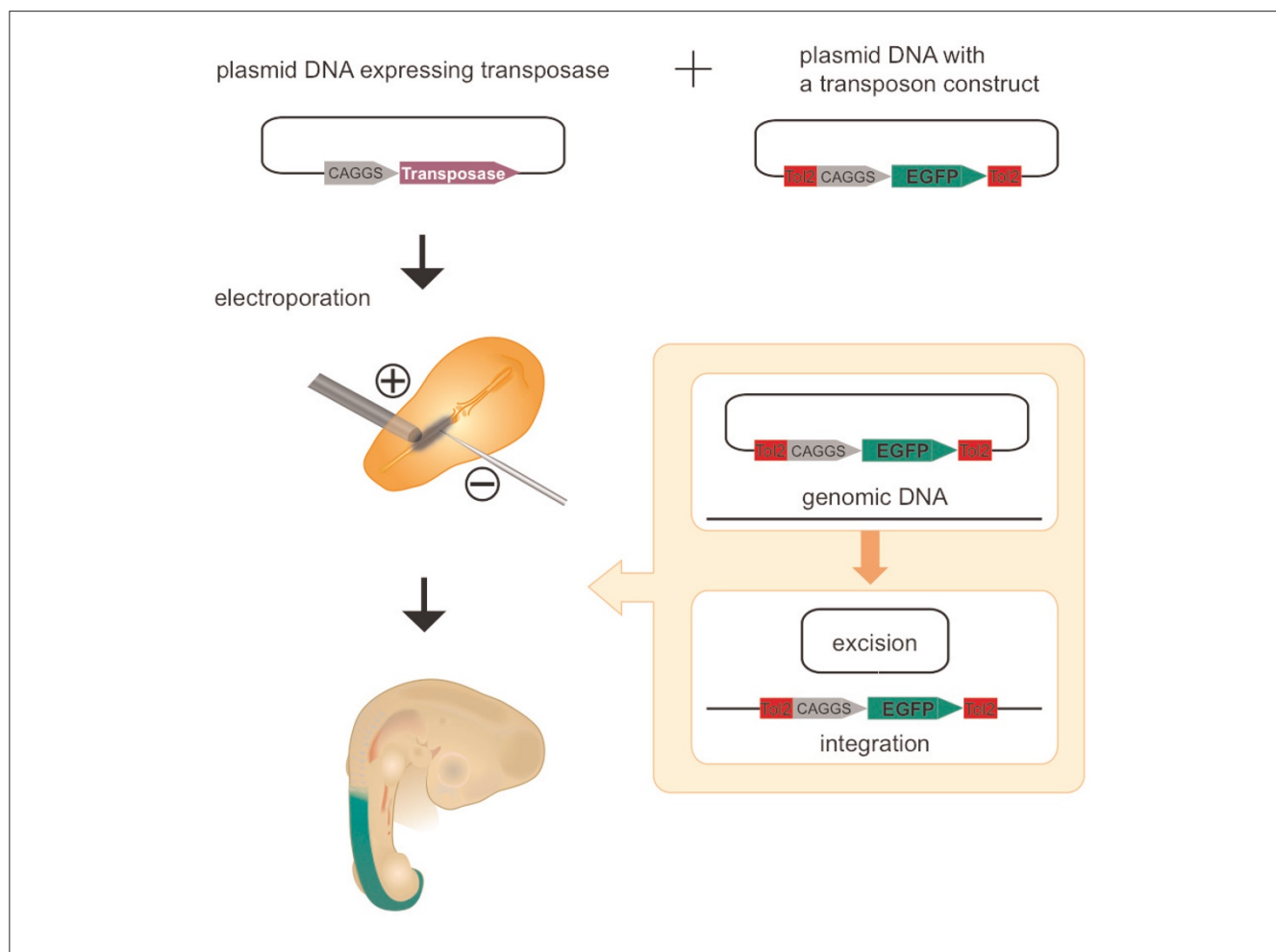


Figure 4
 Transgenesis in *Xenopus tropicalis*. The synthetic transposase mRNA and a transposon donor plasmid containing a *Tol2* construct with a ubiquitous promoter and the gene encoding green fluorescent protein (GFP) are co-injected into *X. tropicalis* fertilized eggs. The *Tol2* construct is excised from the donor plasmid [25] and integrated into the genome. In the study conducted by Hamlet and coworkers [26], injected GFP-positive tadpoles were raised to adulthood. *Tol2* insertions created in germ cells are transmitted to the F₁ generation. Germ cells of the injected frogs are mosaic, and, by crossing the injected frog (founder) with wild-type frog, nontransgenic tadpoles and transgenic tadpoles heterozygous for the *Tol2* insertion are obtained [26].

threshold at which over-production inhibition can be detected. Indeed, the transpositional activity of the maize *Activator (Ac)* element was decreased as the amount of the transposase increased [37], indicating at least that a

**Figure 5**

Transient expression assay in chicken. A plasmid DNA containing the transposase cDNA under the control of a ubiquitous promoter (CAGGS) and a transposon-donor plasmid DNA containing a *Tol2* construct with the CAGGS promoter and the gene encoding green fluorescent protein (GFP) are introduced into the somite of a chicken embryo by electroporation. The *Tol2* construct is excised from the plasmid and integrated in the genome. GFP expression in the somites persists until late developmental stages [28].

transposon of the hAT family can suffer from over-production inhibition.

A transposon-donor plasmid DNA containing a *Tol2* construct with the luciferase gene and a helper plasmid expressing the transposase were introduced into mice via the tail vein using the hydrodynamics based transfection method. Sustained luciferase expression was detected in the liver of the injected animals [6]. Then, a *Tol2* construct containing the fumarylacetoacetate hydrolase (FAH) gene was introduced into the liver of FAH-deficient mice, a model for hereditary tyrosinemia type 1. The symptoms of hereditary tyrosinemia type 1 were eliminated in mice receiving the injection. Gene delivery by the hydrodynamics-based transfection method using SB was previously reported [38]. This work demonstrated that *Tol2* could also be used as a tool for gene delivery to somatic cells in live mice.

Although the SB transposon system has been applied to germline transgenesis and mutagenesis in mice [39-42], little effort has been devoted to exploiting *Tol2* for such purposes in mice. It would be interesting to test whether the *Tol2* transposon system can be applied to mouse transgenesis and mutagenesis. Because it was reported that the transpositional activity of *Tol2* is greater than that of SB in human cells [36], an *in vivo* transposition system using *Tol2* may be more efficient than the SB transposon system in mice.

***Tol2* in medaka: why is the transpositional activity low?**

An exogenously introduced *Tol2* element can transpose into the genome of the medaka fish as well [43]. However, useful genetic methods using *Tol2* in medaka have not been developed. This is mainly because the transpositional

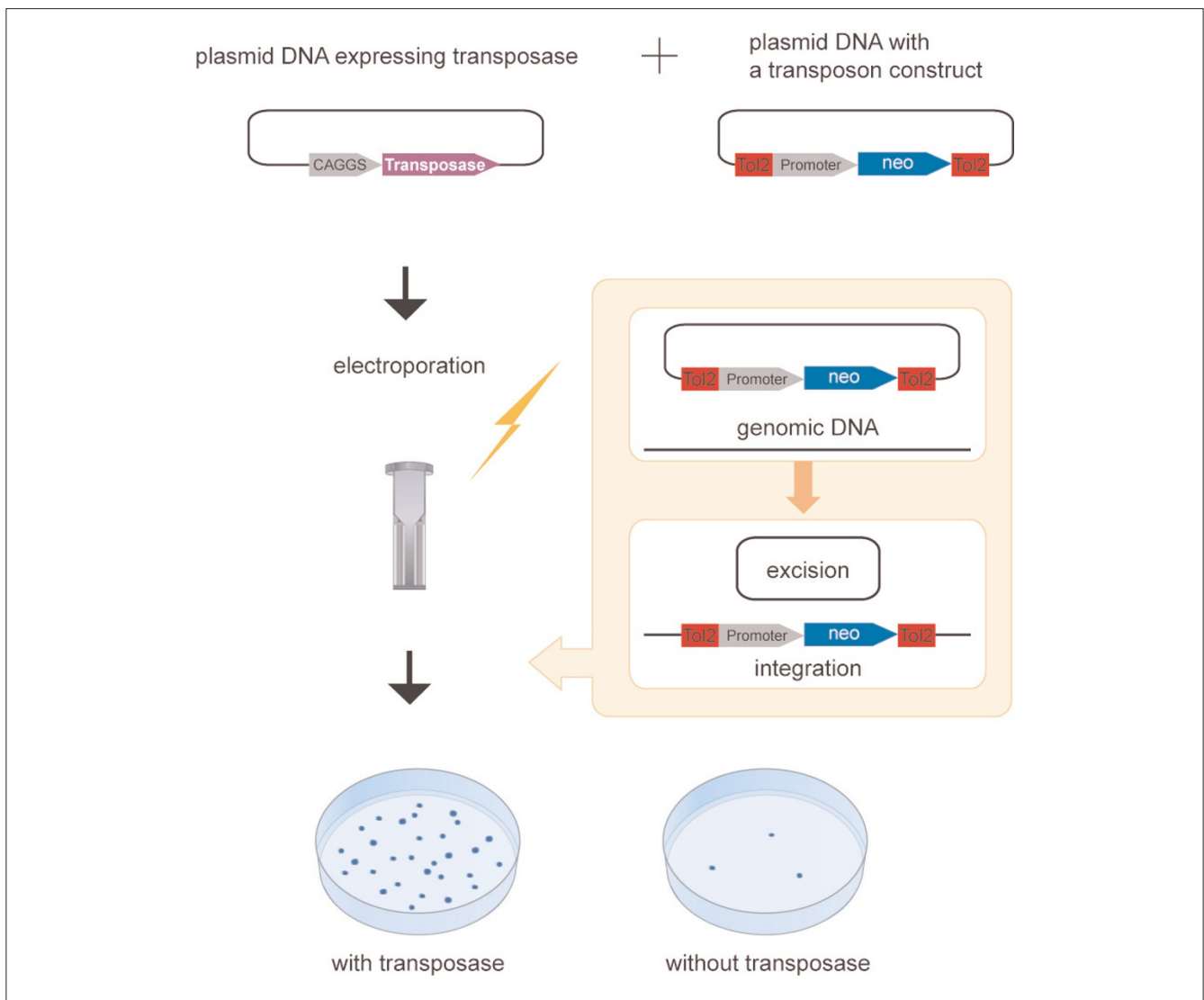


Figure 6
 Chromosomal integration in mammalian culture cells. A plasmid DNA containing the transposase cDNA under the control of a ubiquitous promoter (CAGGS) and a transposon-donor plasmid DNA containing a *Tol2* construct with a ubiquitous promoter (the phosphoglycerate kinase [PGK] promoter used by Kawakami and Noda [33]) and the neomycin-resistance gene are introduced into mammalian culture cells by electroporation. The *Tol2* construct is excised from the plasmid and integrated into the genome. Chromosomal integration of the *Tol2* construct is enhanced, depending on transposase activity [33].

activity of *Tol2* in medaka has been found to be low. Why is the transpositional activity low in an animal that is a natural host for the element? It was suggested that the *Tol2* transposase protein may contain an extranuclear localization signal, and this may be the cause of the low transpositional frequency in medaka [44]. However, this possibility seems unlikely because *Tol2* can transpose efficiently without any modification of the transposase protein in other vertebrates, unless such a mechanism is only effective in medaka cells. There may be an unknown mechanism in medaka that suppresses the transpositional activity. Identification of such

an inhibitory mechanism may be a key to rendering *Tol2* useful for inducing genetic manipulations in medaka.

Conclusion

The *Tol2* transposon system has been shown to be active from fish to mammals. As described above, practical applications of *Tol2* in vertebrate systems are emerging, and *Tol2*-mediated genetic methods have already generated fruitful results, especially in zebrafish and chicken. These studies revealed various features of the *Tol2* transposon system.

First, *Tol2* can transpose in various vertebrates, indicating that, although host factors involved in the process of transposition of *Tol2* have not been identified, such factors should be conservatively present in those vertebrates. Second, *Tol2* can transpose efficiently in a variety of cell types in developing embryos (either differentiating somatic cells or germ cells). Third, *Tol2* can transpose in a wide range of temperatures (25°C to 26°C in zebrafish, and 37°C to 38°C in chicken). Fourth, *Tol2* can integrate almost everywhere in the genome, and there are no preferences with respect to position on a chromosome (proximal or distal to the telomere or the centromere). Fifth, no consensus DNA sequence has been observed in the 8 bp target duplications created upon integration of *Tol2*. This is in contrast to other transposon systems that are currently used in vertebrates; for instance, transposons of the *mariner* family (including SB) integrate in TA [45] and *piggyBac* integrates in TTAA [46]. A sixth important feature of the *Tol2* transposon system is that *Tol2* creates single copy insertions and does not cause gross rearrangements around the integration sites. Therefore, integration sites of *Tol2* can readily be analyzed by inverse polymerase chain reaction (PCR) and linker-mediated PCR. Finally, transgenes cloned on the *Tol2* vector are reliably expressed in transgenic animals and cells. This may suggest that they are free from a putative gene silencing mechanism by the host, which may sometimes suppress expression of transgenes created by introduction of plasmid DNA into cells.

Because the *Tol2* transposon system has been successfully applied to several model vertebrate animals, it should be used as a tool to modify the genomes of other vertebrate animals as well, which are important for agricultural and pharmaceutical purposes. Also, in the future *Tol2* may be used as a gene transfer vector to human cells for therapeutic purposes.

Competing interests

The author declares that they have no competing interests.

Acknowledgements

I thank P Mead, Y Takahashi, and M Taira for discussion; Y Hirai for artwork and M Suster for critical reading of the manuscript. This work was supported by NIH/NIGMS R01 GM069382 and grants from the Ministry of Education, Culture, Sports, Science and Technology of Japan.

This article has been published as part of *Genome Biology* Volume 8, Supplement 1, 2007: Transposons in vertebrate functional genomics. The full contents of the supplement are available online at <http://genomebiology.com/supplements/8/S1>.

References

- Koga A, Suzuki M, Inagaki H, Bessho Y, Hori H: **Transposable element in fish.** *Nature* 1996, **383**:30.
- Kawakami K, Koga A, Hori H, Shima A: **Excision of the *Tol2* transposable element of the medaka fish, *Oryzias latipes*, in zebrafish, *Danio rerio*.** *Gene* 1998, **225**:17-22.
- Kawakami K, Shima A: **Identification of the *Tol2* transposase of the medaka fish *Oryzias latipes* that catalyzes excision of a nonautonomous *Tol2* element in zebrafish *Danio rerio*.** *Gene* 1999, **240**:239-244.
- Kawakami K, Shima A, Kawakami N: **Identification of a functional transposase of the *Tol2* element, an Ac-like element from the Japanese medaka fish, and its transposition in the zebrafish germ lineage.** *Proc Natl Acad Sci USA* 2000, **97**:11403-11408.
- Urasaki A, Morvan G, Kawakami K: **Functional dissection of the *Tol2* transposable element identified the minimal cis-sequence and a highly repetitive sequence in the subterminal region essential for transposition.** *Genetics* 2006, **174**:639-649.
- Balciunas D, Wangensteen KJ, Wilber A, Bell J, Geurts A, Sivasubbu S, Wang X, Hackett PB, Largaespada DA, McIvor RS, et al.: **Harnessing a high cargo-capacity transposon for genetic applications in vertebrates.** *PLoS Genet* 2006, **2**:e169.
- Lampe DJ, Grant TE, Robertson HM: **Factors affecting transposition of the Himar I mariner transposon in vitro.** *Genetics* 1998, **149**:179-187.
- Stuart GW, McMurray JV, Westerfield M: **Replication, integration and stable germ-line transmission of foreign sequences injected into early zebrafish embryos.** *Development* 1988, **103**:403-412.
- Amsterdam A, Lin S, Hopkins N: **The *Aequorea victoria* green fluorescent protein can be used as a reporter in live zebrafish embryos.** *Dev Biol* 1995, **171**:123-129.
- Long Q, Meng A, Wang H, Jessen JR, Farrell MJ, Lin S: ***GATA-1* expression pattern can be recapitulated in living transgenic zebrafish using GFP reporter gene.** *Development* 1997, **124**:4105-4111.
- Higashijima S, Okamoto H, Ueno N, Hotta Y, Eguchi G: **High-frequency generation of transgenic zebrafish which reliably express GFP in whole muscles or the whole body by using promoters of zebrafish origin.** *Dev Biol* 1997, **192**:289-299.
- Lin S, Gaiano N, Culp P, Burns JC, Friedmann T, Yee JK, Hopkins N: **Integration and germ-line transmission of a pseudotyped retroviral vector in zebrafish.** *Science* 1994, **265**:666-669.
- Gaiano N, Allende M, Amsterdam A, Kawakami K, Hopkins N: **Highly efficient germ-line transmission of proviral insertions in zebrafish.** *Proc Natl Acad Sci USA* 1996, **93**:7777-7782.
- Kawakami K, Takeda H, Kawakami N, Kobayashi M, Matsuda N, Mishina M: **A transposon-mediated gene trap approach identifies developmentally regulated genes in zebrafish.** *Dev Cell* 2004, **7**:133-144.
- Taylor MR, Kikkawa S, Diez-Juan A, Ramamurthy V, Kawakami K, Carmeliet P, Brockherhoff SE: **The zebrafish *pob* gene encodes a novel protein required for survival of red cone photoreceptor cells.** *Genetics* 2005, **170**:263-273.
- Zou J, Beermann F, Wang J, Kawakami K, Wei X: **The *Fugu tyrp1* promoter directs specific GFP expression in zebrafish: tools to study the RPE and the neural crest-derived melanophores.** *Pigment Cell Res* 2006, **19**:615-627.
- Blaser H, Reichman-Fried M, Castanon I, Dumstreit K, Marlow FL, Kawakami K, Solnica-Krezel L, Heisenberg CP, Raz E: **Migration of zebrafish primordial germ cells: a role for myosin contraction and cytoplasmic flow.** *Dev Cell* 2006, **11**:613-627.
- Kosaka K, Kawakami K, Sakamoto H, Inoue K: **Spatiotemporal localization of germ plasm RNAs during zebrafish oogenesis.** *Mech Dev* 2007, **124**:279-289.
- Jeong JY, Einhorn Z, Mathur P, Chen L, Lee S, Kawakami K, Guo S: **Patterning the zebrafish diencephalon by the conserved zinc-finger protein *Fez1*.** *Development* 2007, **134**:127-136.
- Parinov S, Kondrichin I, Korzh V, Emelyanov A: ***Tol2* transposon-mediated enhancer trap to identify developmentally regulated zebrafish genes in vivo.** *Dev Dyn* 2004, **231**:449-459.
- Kawakami K: **Transposon tools and methods in zebrafish.** *Dev Dyn* 2005, **234**:244-254.
- Fisher S, Grice EA, Vinton RM, Bessling SL, Urasaki A, Kawakami K, McCallion AS: **Evaluating the biological relevance of putative enhancers using *Tol2* transposon-mediated transgenesis in zebrafish.** *Nat Protoc* 2006, **1**:1297-1305.
- Fisher S, Grice EA, Vinton RM, Bessling SL, McCallion AS: **Conservation of RET regulatory function from human to zebrafish without sequence similarity.** *Science* 2006, **312**:276-279.

24. Offield MF, Hirsch N, Grainger RM: **The development of *Xenopus tropicalis* transgenic lines and their use in studying lens developmental timing in living embryos.** *Development* 2000, **127**:1789-1797.
25. Kawakami K, Imanaka K, Itoh M, Taira M: **Excision of the *Tol2* transposable element of the medaka fish *Oryzias latipes* in *Xenopus laevis* and *Xenopus tropicalis*.** *Gene* 2004, **338**:93-98.
26. Hamlet MR, Yergeau DA, Kuliyeve E, Takeda M, Taira M, Kawakami K, Mead PE: ***Tol2* transposon-mediated transgenesis in *Xenopus tropicalis*.** *Genesis* 2006, **44**:438-445.
27. Momose T, Tonegawa A, Takeuchi J, Ogawa H, Umesono K, Yasuda K: **Efficient targeting of gene expression in chick embryos by microelectroporation.** *Dev Growth Differ* 1999, **41**:335-344.
28. Sato Y, Kasai T, Nakagawa S, Tanabe K, Watanabe T, Kawakami K, Takahashi Y: **Stable integration and conditional expression of electroporated transgenes in chicken embryos.** *Dev Biol* 2007, **305**:616-624.
29. Tanabe K, Takahashi Y, Sato Y, Kawakami K, Takeichi M, Nakagawa S: **Cadherin is required for dendritic morphogenesis and synaptic terminal organization of retinal horizontal cells.** *Development* 2006, **133**:4085-4096.
30. Bosselman RA, Hsu RY, Boggs T, Hu S, Bruszewski J, Ou S, Kozar L, Martin F, Green C, Jacobsen F, et al.: **Germline transmission of exogenous genes in the chicken.** *Science* 1989, **243**:533-535.
31. Sherman A, Dawson A, Mather C, Gilhooly H, Li Y, Mitchell R, Finnegan D, Sang H: **Transposition of the *Drosophila* element *mariner* into the chicken germ line.** *Nat Biotechnol* 1998, **16**:1050-1053.
32. Mozdziaik PE, Petite JN: **Status of transgenic chicken models for developmental biology.** *Dev Dyn* 2004, **229**:414-421.
33. Kawakami K, Noda T: **Transposition of the *Tol2* element, an *Ac*-like element from the Japanese medaka fish *Oryzias latipes*, in mouse embryonic stem cells.** *Genetics* 2004, **166**:895-899.
34. Lohe AR, Hartl DL: **Autoregulation of mariner transposase activity by overproduction and dominant-negative complementation.** *Mol Biol Evol* 1996, **13**:549-555.
35. Geurts AM, Yang Y, Clark KJ, Liu G, Cui Z, Dupuy AJ, Bell JB, Largaespada DA, Hackett PB: **Gene transfer into genomes of human cells by the sleeping beauty transposon system.** *Mol Ther* 2003, **8**:108-117.
36. Wu SC, Meir YJ, Coates CJ, Handler AM, Pelczar P, Moisyadi S, Kaminski JM: ***piggyBac* is a flexible and highly active transposon as compared to *sleeping beauty*, *Tol2*, and *Mos1* in mammalian cells.** *Proc Natl Acad Sci USA* 2006, **103**:15008-15013.
37. Kunze R, Behrens U, Courage-Franzkowiak U, Feldmar S, Kuhn S, Lutticke R: **Dominant transposition-deficient mutants of maize *Activator (Ac)* transposase.** *Proc Natl Acad Sci USA* 1993, **90**:7094-7098.
38. Yant SR, Meuse L, Chiu W, Ivics Z, Izsvak Z, Kay MA: **Somatic integration and long-term transgene expression in normal and haemophilic mice using a DNA transposon system.** *Nat Genet* 2000, **25**:35-41.
39. Dupuy AJ, Fritz S, Largaespada DA: **Transposition and gene disruption in the male germline of the mouse.** *Genesis* 2001, **30**:82-88.
40. Fischer SE, Wienholds E, Plasterk RH: **Regulated transposition of a fish transposon in the mouse germ line.** *Proc Natl Acad Sci USA* 2001, **98**:6759-6764.
41. Horie K, Kuroiwa A, Ikawa M, Okabe M, Kondoh G, Matsuda Y, Takeda J: **Efficient chromosomal transposition of a *Tc1/mariner*-like transposon *Sleeping Beauty* in mice.** *Proc Natl Acad Sci USA* 2001, **98**:9191-9196.
42. Dupuy AJ, Akagi K, Largaespada DA, Copeland NG, Jenkins NA: **Mammalian mutagenesis using a highly mobile somatic *Sleeping Beauty* transposon system.** *Nature* 2005, **436**:221-226.
43. Koga A, Hori H, Sakaizumi M: **Gene transfer and cloning of flanking chromosomal regions using the medaka fish *Tol2* transposable element.** *Mar Biotechnol (NY)* 2002, **4**:6-11.
44. Iida A, Tachibana A, Hamada S, Hori H, Koga A: **Low transposition frequency of the medaka fish *Tol2* element may be due to extranuclear localization of its transposase.** *Genes Genet Syst* 2004, **79**:119-124.
45. Rosenzweig B, Liao LW, Hirsh D: **Target sequences for the *C. elegans* transposable element *Tc1*.** *Nucleic Acids Res* 1983, **11**:7137-7140.
46. Cary LC, Goebel M, Corsaro BG, Wang HG, Rosen E, Fraser MJ: **Transposon mutagenesis of baculoviruses: analysis of *Trichoplusia ni* transposon IFP2 insertions within the FP-locus of nuclear polyhedrosis viruses.** *Virology* 1989, **172**:156-169.