

## Sp1- and Krüppel-like transcription factors

Joanna Kaczynski<sup>\*†</sup>, Tiffany Cook<sup>‡</sup> and Raul Urrutia<sup>\*†§</sup>

Addresses: <sup>\*</sup>Gastroenterology Research Unit, <sup>†</sup>Tumor Biology Program, and <sup>§</sup>Department of Biochemistry and Molecular Biology, Mayo Clinic, Rochester, MN 55901, USA. <sup>‡</sup>Department of Biology, New York University, New York, NY 10003, USA.

Correspondence: Raul Urrutia. E-mail: [urrutia.raul@mayo.edu](mailto:urrutia.raul@mayo.edu)

Published: 3 February 2003

*Genome Biology* 2003, 4:206

The electronic version of this article is the complete one and can be found online at <http://genomebiology.com/2003/4/2/206>

© 2003 BioMed Central Ltd

### Summary

Sp1-like proteins and Krüppel-like factors (KLFs) are highly related zinc-finger proteins that are important components of the eukaryotic cellular transcriptional machinery. By regulating the expression of a large number of genes that have GC-rich promoters, Sp1-like/KLF transcription regulators may take part in virtually all facets of cellular function, including cell proliferation, apoptosis, differentiation, and neoplastic transformation. Individual members of the Sp1-like/KLF family can function as activators or repressors depending on which promoter they bind and the coregulators with which they interact. A long-standing research aim has been to define the mechanisms by which Sp1-like factors and KLFs regulate gene expression and cellular function in a cell- and promoter-specific manner. Most members of this family have been identified in mammals, with at least 21 Sp1-like/KLF proteins encoded in the human genome, and members are also found in frogs, worms and flies. Sp1-like/KLF proteins have highly conserved carboxy-terminal zinc-finger domains that function in DNA binding. The amino terminus, containing the transcription activation domain, can vary significantly between family members.

### Gene organization and evolutionary history

Sp1 was identified in the early 1980s and was one of the first transcription factors to be purified and cloned from, and characterized in, mammalian cells [1,2]. Sp1 was shown to recognize and specifically bind to GC-rich sites within the simian virus 40 (SV40) promoter via three Cys<sub>2</sub>His<sub>2</sub> zinc-finger motifs. A similar DNA-binding domain had been found in many developmental regulators, including the *Drosophila* embryonic pattern regulator Krüppel [2]. Subsequently, other transcription factors were identified that had zinc-finger motifs highly similar to those of Sp1, thereby defining a novel class of Sp1-like proteins or Krüppel-like factors (KLFs) [3-9]. Because many members of the Sp1-like/KLF family have acquired multiple names over time, the nomenclature for these proteins is currently being revised and standardized. In this article, we follow the current nomenclature of Sp1-Sp6, with the remainder of the family called KLFs, and we refer to other names of each protein on first mention.

Sp1-like/KLF proteins are present in species ranging from the nematode *Caenorhabditis elegans* to humans and appear to have evolved through multiple gene-duplication events [10-14]. The fruitfly, for instance, has three Sp1-like proteins [12,13], whereas up to 21 Sp1-like/KLF genes have been identified in humans by a variety of cloning approaches. So far, homologs of 17 of the 21 human Sp1-like/KLF proteins have been found in mouse, and 11 have been found in rat. Other species, such as zebrafish, have fewer members of the Sp1-like family (Table 1). To date, no systematic comparisons have been made of the structural and functional properties of Sp1-like/KLF proteins in humans and other species.

Like Sp1, factors of the Sp1-like/KLF family can bind various GC-rich DNA elements and regulate transcription. Furthermore, many Sp1-like transcription factors both in mammals and in invertebrates are involved in processes regulating cell

growth and control morphogenetic pathways [15,16]. Unlike other important developmental regulators, such as Hox transcription factors or factors containing Krüppel-associated (KRAB) boxes [17-19], that are encoded in gene clusters, the genes encoding Sp1-like proteins are randomly dispersed throughout the genome and their products are thought to function independently; the exception is one locus that contains two genes, namely those coding for KLF2 (LKLF) and KLF1 (EKLF). The gene structures of Sp1-like/KLF proteins have not been studied in detail.

Within the Sp1-like/KLF family, several subgroups have been defined on the basis of sequence and functional similarities (Figure 1a). The factors that are most highly related to Sp1 are named Sp1-Sp6 and form one subgroup (the 'Sp' proteins or subgroup I). The other Sp1-like/KLF proteins make up two additional subgroups (subgroups II and III). According to the rules of the new nomenclature, these proteins are numbered as KLF factors, corresponding to the approximate order in which the genes were described (KLF1-KLF16; see Table 1).

### Characteristic structural features

To function as site-specific transcription factors, proteins require at least three domains: a DNA-binding domain, a nuclear localization signal, and a transcriptional regulatory domain. The defining feature of Sp1-like/KLF proteins is a highly conserved DNA-binding domain (more than 65% sequence identity among family members) at the carboxyl terminus that has three tandem Cys<sub>2</sub>His<sub>2</sub> zinc-finger motifs (Figure 1b,2). In addition to DNA binding, the zinc-finger motifs may also function in protein-protein interactions that modulate DNA-binding specificity [20,21]. The amino-terminal regions of the Sp1-like/KLF proteins are much more variable and contain transcriptional activation or repression domains. In addition, Sp1-like/KLF proteins have nuclear localization sequences, which can occur immediately adjacent to, or within, the zinc-finger motifs [22,23].

### The Sp1-like/KLF zinc-finger domain

Each Sp1-like zinc-finger motif conforms to the Cys<sub>2</sub>His<sub>2</sub> zinc-finger consensus sequence C-X<sub>2</sub>-5-C-X<sub>3</sub>-(F/Y)-X<sub>5</sub>-ψ-X<sub>2</sub>-H-X<sub>3</sub>-5-H (in the single-letter amino-acid code), where X represents any amino acid and ψ is a hydrophobic residue [24]. The overall amino-acid similarity between the zinc-finger motifs of Sp1 and other members of the Sp1-like/KLF family is a minimum of 66.7 % (Figure 1b), and the length of each motif is invariant: the first two zinc-finger motifs are 23 amino acids and the third zinc finger 21 amino acids long. The linkers separating the zinc fingers are seven amino acids long and also highly conserved - TGE(R/K)(P/k/r)(F/y)X.

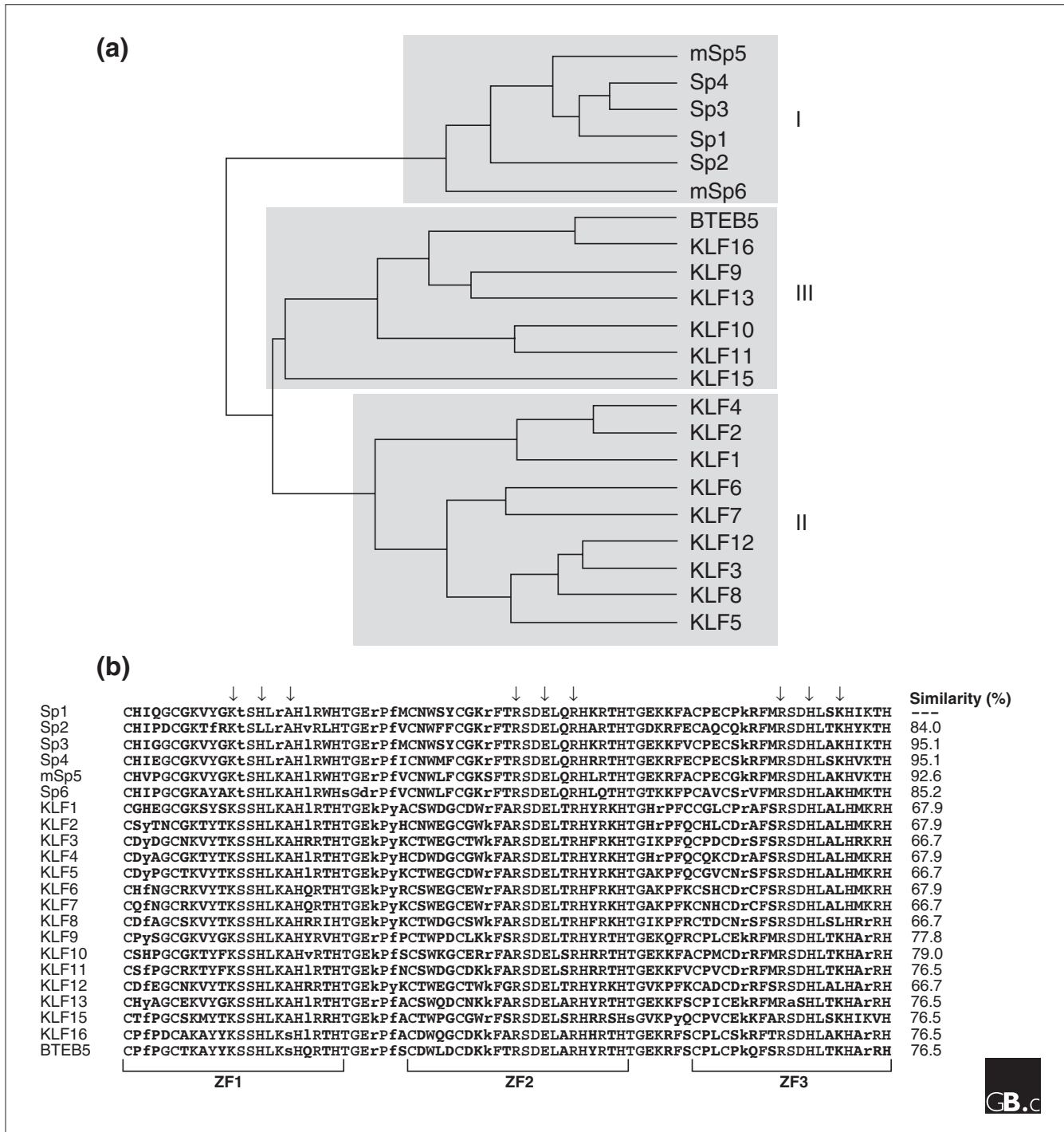
The DNA-binding domains of Sp1-like/KLF proteins have not yet been studied using X-ray crystallography, but crystal structures of the related zinc-finger proteins TFIIIA, a

general transcription factor, and Zif268, an immediate-early gene, have provided some information about how Sp1-like/KLF proteins bind DNA [25-27], as the structures of TFIIIA and Zif268 can be used as templates in molecular modeling experiments. Preliminary results from studies of this type in our laboratory indicate that Sp1-like/KLF proteins bind DNA in a manner similar to TFIIIA and Zif268 (J.K, T.C. and R.U., unpublished observations). These studies, however, have not yet been able to reveal subtle structural features that could correlate with some observed biochemical differences between members of the Sp1-like/KLF family. Thus, more exhaustive analyses using direct biophysical methodology, such as nuclear magnetic resonance or crystallography, combined with molecular dynamic simulations, are necessary to address this problem.

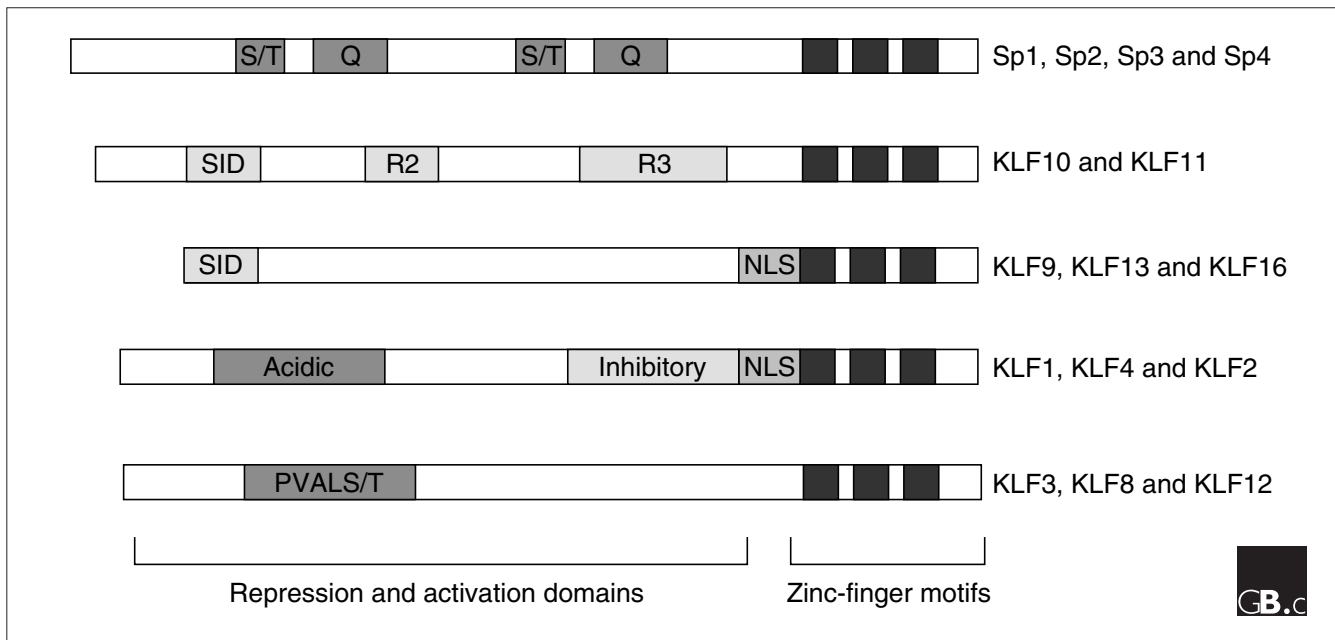
Biochemical DNA-binding studies have shown that most Sp1-like/KLF proteins have similar affinities for different GC-rich sites [28-31]. Importantly, the amino acids that are predicted to interact with DNA are identical among several members (Figure 1b), and competition for DNA binding has been shown for some of these members; for example, Sp1 and Sp3 compete for the same sites, as do Sp1 and KLF9 (BTEB1), Sp1 and KLF13 (BTEB3), Sp1 and KLF4 (GKLF), and KLF1 and KLF3 (BKLF) [9,30,32-34]. It is worth noting that in those cases that have these key residues differing between members of the family, the DNA-binding specificity is frequently altered. For example, Sp2, which has a leucine residue within the first zinc-finger motif in place of the histidine found in the corresponding region of Sp1, preferentially recognizes the GT box (5'-GGTGTGGGG-3'), found in many different promoters, rather than the GC box [9,35]. In addition, class II proteins, with the exception of KLF6 (CPBP), contain a leucine instead of a lysine in the third zinc-finger motif and preferentially bind the 5'-CACCC-3' element sequence, which is found, for example, in the β-globin gene promoter [5,8]. Previous studies also suggested that the linkers between the zinc-finger motifs contribute to high-affinity binding of certain zinc-finger proteins [24]. The linker regions of members of the Sp1-like/KLF family have several potentially relevant differences, but it is currently not known if all of these contribute to differences in DNA-binding activity.

### Transcriptional regulatory domains

Despite the high degree of similarity in the DNA-binding activities of the Sp1-like/KLF proteins different family members vary range broadly in their ability to regulate transcription, and thus to regulate morphogenetic processes. Sp1, for instance, is one of the most potent transcriptional activators characterized to date [9,36], whereas KLF11 (TIEG2) functions as a potent transcriptional repressor [37,38]. In addition, several Sp1-like/KLF proteins can function as either activators or repressors, depending on the cellular context in which the function and the promoters they bind [20,23,28,29,33,34,37-43].



**Figure 1**  
Mammalian members of the Sp1-like/KLF family. **(a)** A phylogenetic tree of human Sp1-like/KLF proteins and mouse Sp5 and Sp6 (mSp5 and mSp6) identifies three general subgroups. Subgroup I consists of the proteins most highly related to Sp1 (Sp1-Sp6). The other Sp1-like/KLF proteins are divided into two additional groups (subgroups II and III). The tree was generated using Genetic Computer Group (GCG) sequence analysis software. **(b)** Sequence alignment of the zinc-finger domains of Sp1-like/KLF protein family members. The sequence of the zinc-finger motifs of human Sp1 was compared with the corresponding regions of previously identified human Sp1-like proteins and with mouse Sp5. The consensus zinc fingers (ZF1, ZF2 and ZF3) are indicated below the sequences and the amino-acid residues predicted to interact with DNA according to the Klevit model [58] are indicated by arrows. Identical residues are in black, similar residues in gray and different residues in lower case. The percentage similarity between the Sp1 and the other Sp1-like/KLF zinc-finger domains is indicated on the right. Note that the amino acids predicted to make contact with DNA within the first (KHA), second (RER) and third (RHK) zinc-finger domains of Sp1 are nearly identical to the corresponding regions of other members of the Sp1-like/KLF family. All sequences are available in the NCBI human genome database [57].

**Figure 2**

Structural properties of Sp1-like/KLF proteins. Sp1-like/KLF proteins have highly homologous carboxy-terminal DNA-binding domains characterized by three Cys<sub>2</sub>His<sub>2</sub> zinc-finger motifs and recognizing GC-rich DNA elements, and variant amino termini. The members of the family can be classified into subgroups on the basis of common structural and functional features of the amino termini; these correlate well with the subgroups predicted by sequence similarities in Figure 1a. Some members of subgroup I (Sp1, Sp2, Sp3, and Sp4) contain glutamine-rich (Q) and serine/threonine-rich (S/T) amino-terminal transcription activation domains. Two members of subgroup III, KLF10 and KLF11, are TGF $\beta$ -inducible repressors and have three conserved amino-terminal repression domains, including the Sin3 interaction domain (SID), which mediates interaction with the corepressor mSin3A. Three other members of subgroup III, KLF9, KLF13 and KLF16, are also characterized by a functional SID domain. KLF1, KLF2 and KLF4, which belong to subgroup II, are characterized by amino-terminal acidic activation domains, inhibitory regions adjacent to the zinc fingers and a conserved nuclear localization signal (NLS) sequence. In addition, KLF13 contains a similar nuclear localization sequence. Other members of subgroup II, KLF3, KLF8 and KLF12, have a conserved repression motif (PVALS/T) that interacts with the corepressor CtBP2.

The amino-terminal domains of Sp1-like/KLF proteins are highly variable, and recent studies have revealed that several members of the family regulate transcription by interacting with coactivators and corepressors via specific amino-terminal activation and repression domains (Figure 2). Glutamine-rich regions within the amino termini of Sp1 and Sp3 interact with components of the general transcription factor TAFII130 to activate transcription [44], whereas a PVALS/T motif within the amino termini of KLF3 (BKLF), KLF8 (BKLF3) and KLF12 (AP2-rep) associates with corepressors belonging to the C-terminal binding protein (CtBP) family to mediate transcriptional repression [6,45].

TIEG proteins (TIEG1 and TIEG2; or KLF10 and KLF11) and BTEB proteins (BTEB1, BTEB3 and BTEB4; or KLF9, KLF13 and KLF16), all of which belong to class III of the Sp1-like/KLF family, also share a conserved repression motif, an  $\alpha$ -helical domain highly related to the Sin3 interaction domain (SID) of the transcriptional repressor Mad1 (Figure 2). This SID-like domain is sufficient to mediate repression by interacting with the histone deacetylase corepressor complex mSin3A [29,34,38], and this function can be modified by cell-signaling events. For instance,

phosphorylation of four residues in a region adjacent to the KLF11 SID-like domain by the signaling pathway involving extracellular regulator kinase 2 (ERK2) disrupts interaction with mSin3A and results in a significant loss of repressor function [46].

### Localization and function

Expression and gene-knockout studies are beginning to reveal that most, if not all, Sp1-like/KLF proteins are involved in growth-regulatory or developmental processes of a large number of tissues [4] (Table 1). Sp1, for instance, is ubiquitously expressed in murine cells, and the knockout of this gene leads to gross global morphological defects very early in development [16]. In contrast, other members, such as KLF1 and KLF2, are expressed specifically in erythroid cells and T lymphocytes, respectively, suggesting a more cell-type-specific function for these factors. Indeed, the knockout of KLF1 results in selective defects in erythropoiesis [47,48], whereas KLF2 is involved specifically in T-cell quiescence and survival [49]. In *Drosophila* and *Xenopus*, homologs of Sp1 appear to be important for development [11-13].

**Table 1**

**Summary of the functional features of Sp1-like/KLF family members**

Protein*	KLF number	Species	Chromosomal localization†	Transcriptional activity (and functional domains)	Expression pattern	Interacting coactivatorand/or corepressor	Cellular functions
Sp1	-	Human, mouse, rat and <i>Drosophila</i>	12q13	Activator (Q-rich domains)	Ubiquitous	CRSP, p300/CBP, TAFII130	Embryogenesis
Sp2	-	Human, mouse and rat	17q21	Unknown (Q-rich domain)		Unknown	Unknown
Sp3	-	Human, mouse and rat	2q31	Activator and/or repressor (Q-rich domains)	Ubiquitous	Unknown	Unknown
Sp4	-	Human, mouse and rat	7p15	Activator (Q-rich domains)	Brain-enriched	Unknown	Post-natal survival and male fertility
mSp5	-	Mouse		Unknown	Ubiquitous	Unknown	Unknown
Sp6	KLF14	Human and mouse	17q21	Activator	Ubiquitous	Unknown	Unknown
EKLF	KLF1	Human and mouse	19p13	Activator (acidic domain)	Erythroid and mast cells	p300/CBP, PCAF, SWI/SNF and mSin3A	Erythropoiesis
LKLF	KLF2	Human and mouse	19p13	Activator (acidic domain)	Lung, blood vessels, lymphocytes	Unknown	Blood vessel, lung development, T-cell survival
BKLF	KLF3	Human, mouse and rat	4p14	Activator/repressor (PVDLS/T motif)	Erythroid tissue- and brain-enriched	CtBP2	Unknown
GKLF	KLF4	Human, mouse, rat and zebrafish	9q31	Activator and/or repressor (acidic domain)	Gut-enriched	p300/CBP	Anti-proliferation, survival
IKLF	KLF5	Human, mouse and rat	13q21	Activator	Gut and epithelial tissues	Unknown	Cell growth
CPBP	KLF6	Human and mouse	10p15	Activator	Ubiquitous	Unknown	Putative tumor suppressor
UKLF	KLF7	Human and mouse	2q32	Activator (acidic domain)	Ubiquitous	Unknown	Cell-cycle arrest
BKLF3	KLF8	Human	Xp11	Repressor (PVDLS/T motif)	Ubiquitous	CtBP2	Unknown
BTEB1	KLF9	Human, mouse and rat	9q13	Activator/repressor (SID)	Ubiquitous	mSin3A	Neurite outgrowth and carcinogen metabolism
TIEG1	KLF10	Human	8q22	Repressor (SID, R2, R3)	Ubiquitous	mSin3A	Apoptosis, anti-proliferation
TIEG2/ FKLF	KLF11	Human	2p25	Activator and/or repressor (SID, R2, R3)	Ubiquitous	mSin3A	Anti-proliferation
AP-2rep	KLF12	Human, mouse, rat and zebrafish	13q21	Repressor (PVDLS/T motif)	Brain, kidney, liver and lung	CtBP1	Unknown
BTEB3/ RFLAT-1/ FKLF-2	KLF13	Human, mouse and rat	15q12	Activator/repressor (SID, R2 and R3)	Ubiquitous	mSin3A, p300/CBP and PCAF	Anti-proliferation and carcinogen metabolism
KKLF	KLF15	Human, mouse and rat	3q13	Repressor	Ubiquitous	Unknown	Unknown
BTEB4/ mDRRF	KLF16	Human and mouse	19q13	Repressor (SID)	Ubiquitous	mSin3A	Carcinogen metabolism
BTEB5	-	Human	7	Unknown	Unknown	Unknown	Unknown

\*Original name with which the protein was first published. †Chromosomal localization data refer to the human genes and have been obtained from the human genome database of the National Center for Biotechnology Information (NCBI) [57].

Because many Sp1-like/KLF proteins regulate cell growth in a variety of cell types, it is not surprising that some members of the family also appear to participate in mechanisms leading to carcinogenesis. Sp1 expression and activity is observed to be increased in epithelial carcinomas compared with benign tumors, such as papillomas, suggesting that Sp1 may be involved in tumor progression [50]. Similarly, KLF4 appears to promote cell growth in some cancers, such as breast cancer [51,52], and is downregulated in a manner similar to tumor suppressor genes in other cancers [53], suggesting that this gene may play distinct roles in carcinogenesis in different contexts. KLF6 was also recently reported as a candidate tumor suppressor gene that is mutated in prostate cancer [54], and the ability of KLF6 to inhibit cell growth was reduced by mutations within its transcriptional regulatory domain.

Together, these results indicate that while some Sp1-like/KLF proteins play a ubiquitous role in mammalian cell physiology, others have more cell-type-restricted functions. All of them appear to participate in morphogenetic pathways, however. It is therefore important to begin to understand both the similarities and differences between family members that direct their individual functions.

### Mechanism

Several members of the Sp1-like/KLF family can regulate transcription by interacting with corepressors or coactivators. Recent evidence suggests that histone acetylation and deacetylation, which are associated with repression and activation of transcription, respectively, may serve as a switch for Sp1-like/KLF proteins to function as activators or repressors. KLF13, for instance, activates several promoters (such as, the promoters of SV40, the C-C chemokine RANTES, and  $\gamma$ -globin [40,55,56]), but represses others (such as the cytochrome P450 CYP1A1 [29,34]). This indicates that the *trans*-regulatory activity of KLF13 is in part promoter-dependent. In the case of activation, Song *et al.* [20] have shown that the coactivators CREB-binding protein (CBP) and its homolog p300 and the CBP/p300-associated factor (PCAF) bind to and acetylate the zinc-finger domain of KLF13, thereby stimulating KLF13 DNA-binding activity. In addition, a region within the amino terminus of KLF13 has been reported to function as an activation domain, although no coactivator has been shown to associate with this region of the protein. More recently, we [29,38] have also identified three unique repression domains, the SID, R2 and R3 domains, within the amino-terminal region of KLF13 that interacts with the mSin3A histone deacetylase corepressor complex and have shown that this interaction allows KLF13 to repress expression of CYP1A1. The residues of the SID of KLF13 overlap with the amino-terminal region, which can also function as an activation domain [23]. Thus, it will be interesting to ascertain what mechanisms dictate whether KLF13 functions as an activator or a repressor for a given gene. For example, does the histone deacetylase activity

recruited by the amino terminus of KLF13 remove the modified acetyl groups within its zinc-finger domain? It will be important to see how these transcriptional regulatory mechanisms function to dictate different developmental processes.

### Frontiers

Several lines of investigation are needed to further our understanding of how the many members of the Sp1-like/KLF protein family regulate gene expression in a promoter-, cell-, and tissue-specific manner; whether they antagonize each other's functions to fine-tune specific cellular processes; and whether they participate in a hierarchical cascade of gene expression. The identification of the structural features that correlate with either similarities or differences between family members are necessary not only for better understanding of the biochemistry of Sp1-like/KLF proteins but also for a theoretical framework to be constructed for use in the development of specific small-molecule antagonists, which can be used to manipulate Sp1-like/KLF proteins both *in vitro* and *in vivo*.

Another important area of research pertains to the transcriptional regulatory function of the amino-terminal domains of these proteins. What are the molecular mechanisms that regulate how these domains interact with coregulatory complexes and thereby repress or activate gene expression? Further insights into the functions of different Sp1-like/KLF proteins have the potential to change the partially informative classification of these proteins, which is currently based on primary structure. Lastly, because these proteins are important in morphogenesis, it is likely that they may play a significant role in the mechanisms underlying human diseases that are characterized by aberrant growth and differentiation, such as cancer. Future studies of the Sp1-like/KLF proteins have a large potential for defining the machinery that not only regulates physiological processes but may also modulate human diseases.

### References

1. Dynan WS, Tjian R: **The promoter-specific transcription factor Sp1 binds to upstream sequences in the SV40 early promoter.** *Cell* 1983, **35**:79-87.  
Identification of Sp1.
2. Kadonaga JT, Carner KR, Masiarz FR, Tjian R: **Isolation of cDNA encoding transcription factor Sp1 and functional analysis of the DNA binding domain.** *Cell* 1987, **51**:1079-1090.  
Cloning of the cDNA that encodes Sp1.
3. Turner J, Crossley M: **Mammalian Kruppel-like transcription factors: more than just a pretty finger.** *Trends Biochem Sci* 1999, **24**:236-240.  
A review the Sp1-like/KLF proteins.
4. Black AR, Black JD, Azizkhan-Clifford J: **Sp1 and kruppel-like factor family of transcription factors in cell growth regulation and cancer.** *J Cell Physiol* 2001, **188**:143-160.  
A review of the role of Sp1-like/KLF proteins in cell growth regulation and cancer.
5. Dang DT, Pevsner J, Yang VW: **The biology of the mammalian Kruppel-like family of transcription factors.** *Int J Biochem Cell Biol* 2000, **32**:1103-1121.

- This review provides a classification scheme of Sp1-like/KLF proteins and discusses their roles in regulating transcription, cell proliferation, differentiation and development.
6. Bieker JJ: **Kruppel-like factors: three fingers in many pies.** *J Biol Chem* 2001, **276**:34355-34358.  
A review of the molecular mechanisms underlying the function of Sp1-like/KLF proteins.
  7. Cook T, Gebelein B, Urrutia R: **Sp1 and its likes: biochemical and functional predictions for a growing family of zinc finger transcription factors.** *Ann NY Acad Sci* 1999, **880**:94-102.  
This article reviews the biochemical properties of Sp1-like/KLF proteins.
  8. Philipsen S, Suske G: **A tale of three fingers: the family of mammalian Sp/XKLF transcription factors.** *Nucleic Acids Res* 1999, **27**:2991-3000.  
A review of the biological roles of some Sp1-like/KLF proteins.
  9. Suske G: **The Sp-family of transcription factors.** *Gene* 1999, **238**:291-300.  
A review focusing on members of subgroup I.
  10. Brown DD, Wang Z, Furlow JD, Kanamori A, Schwartzman RA, Remo BF, Pinder A: **The thyroid hormone-induced tail resorption program during *Xenopus laevis* metamorphosis.** *Proc Natl Acad Sci USA* 1996, **93**:1924-1929.  
This article and [11] describe the identification of *Xenopus* Sp1-like genes.
  11. Ossipova O, Stick R, Pieler T: **XSPR-1 and XSPR-2, novel Sp1 related zinc finger containing genes, are dynamically expressed during *Xenopus* embryogenesis.** *Mech Dev* 2002, **115**:117-122.  
See [10].
  12. Schock F, Purnell BA, Wimmer EA, Jackle H: **Common and diverged functions of the *Drosophila* gene pair *D-Sp1* and *buttonhead*.** *Mech Dev* 1999, **89**:125-132.  
Btd and D-Sp1 play essential and redundant roles for the development of the mechanosensory organ of *Drosophila*.
  13. Wimmer EA, Jackle H, Pfeifle C, Cohen SM: **A *Drosophila* homologue of human Sp1 is a head-specific segmentation gene.** *Nature* 1993, **366**:690-694.  
Identification of the *Drosophila* Sp1 homolog.
  14. Oates AC, Pratt SJ, Vail B, Yan YI, Ho RK, Johnson SL, Postlethwait JH, Zon LI: **The zebrafish *klf* gene family.** *Blood* 2001, **98**:1792-1801.  
This study reports the identification and characterization of zebrafish Kruppel-like factors.
  15. Black AR, Jensen D, Lin SY, Azizkhan JC: **Growth/cell cycle regulation of Sp1 phosphorylation.** *J Biol Chem* 1999, **274**:1207-1215.  
This study shows that phosphorylation of the carboxyl terminus of Sp1 may play a role in regulating Sp transcriptional activity during the cell cycle.
  16. Marin M, Karim A, Visser P, Grosveld F, Philipsen S: **Transcription factor Sp1 is essential for early embryonic development but dispensable for cell growth and differentiation.** *Cell* 1997, **89**:619-628.  
This study describes the embryonic lethal phenotype of the Sp1 knockout mice.
  17. Patel NH, Prince V: **Beyond the Hox complex.** *Genome Biol* 2000, **1**:reviews1027.1-1027.4.  
This article and [18] provide a review on Hox genes.
  18. Ferrier DE, Holland PW: **Ancient origin of the Hox gene cluster.** *Nat Rev Genet* 2001, **2**:33-38.  
See [17].
  19. Eichler EE, Hoffman SM, Adamson AA, Gordon LA, McCready P, Lamerdin JE, Mohrenweiser HW: **Complex beta-satellite repeat structures and the expansion of the zinc finger gene cluster in 19p12.** *Genome Res* 1998, **8**:791-808.  
This study describes the chromosome clustering of the KRAB transcription factors.
  20. Song C-Z, Keller K, Murata K, Asano H, Stamatoyannopoulos G: **Functional interaction between coactivators CBP/p300, PCAF, and transcription factor FKL2.** *J Biol Chem* 2002, **277**:7029-7036.  
This study shows the interaction of KLF13 with coactivators.
  21. Zhang W, Kadam S, Emerson BM, Bieker JJ: **Site-specific acetylation by p300 or CREB binding protein regulates erythroid Kruppel-like factor transcriptional activity via its interaction with the SWI-SNF complex.** *Mol Cell Biol* 2001, **21**:2413-2422.  
These results demonstrate that the acetylation of EKLF by p300/CBP is critical for optimal KLF1 activity.
  22. Shields JM, Yang VW: **Two potent nuclear localization signals in the gut-enriched Kruppel-like factor define a subfamily of closely related Kruppel proteins.** *J Biol Chem* 1997, **272**:18504-18507.  
This study shows that subfamilies of Kruppel-like factors are characterized by conserved nuclear localization signal sequences.
  23. Song A, Patel A, Thamtrakoln K, Liu C, Feng D, Clayberger C, Krensky AM: **Functional domains and DNA-binding sequences of RFLAT-1/KLF13, a Kruppel-like transcription factor of activated T lymphocytes.** *J Biol Chem* 2002, **277**:30055-30065.  
This study describes the activation domains of KLF13.
  24. Wolfe SA, Nekudova L, Pabo CO: **DNA recognition by Cys<sub>2</sub>His<sub>2</sub> zinc finger proteins.** *Annu Rev Biophys Biomol Struct* 2000, **29**:183-212.  
Review about the binding of DNA by zinc-finger-containing proteins.
  25. Elrod-Erickson M, Rould MA, Nekudova L, Pabo CO: **Zif268 protein-DNA complex refined at 1.6 Å: a model system for understanding zinc finger-DNA interactions.** *Structure* 1996, **4**:1171-1180.  
This article and [26] describe the crystal structure analysis of Zif268, a prototypical Cys<sub>2</sub>His<sub>2</sub> zinc-finger protein.
  26. Kim CA, Berg JM: **A 2.2 Å resolution crystal structure of a designed zinc finger protein bound to DNA.** *Nat Struct Biol* 1996, **3**:940-945.  
See [25].
  27. Narayan VA, Kriwacki RW, Caradonna JP: **Structures of zinc finger domains from transcription factor Sp1. Insights into sequence-specific protein-DNA recognition.** *J Biol Chem* 1997, **272**:7801-7809.  
Nuclear magnetic resonance structure analysis of Sp1 zinc-finger motifs.
  28. Cook T, Gebelein B, Mesa K, Mladek A, Urrutia R: **Molecular cloning and characterization of TIEG2 reveals a new subfamily of transforming growth factor-beta-inducible Sp1-like zinc finger-encoding genes involved in the regulation of cell growth.** *J Biol Chem* 1998, **273**:25929-25936.  
Identification of KLF11.
  29. Kaczynski J, Zhang J-S, Ellenrieder V, Conley A, Duenes T, Kester H, van der Burg B, Urrutia R: **The Sp1-like protein BTEB3 inhibits transcription via the BTE box by interacting with mSin3A and HDAC-1 co-repressors and competing with Sp1.** *J Biol Chem* 2001, **276**:36749-36756.  
This study describes the repression domains of KLF13 and the interaction of these domains with corepressors.
  30. Sogawa K, Kikuchi Y, Imataka H, Fujii-Kuriyama Y: **Comparison of DNA binding properties between BTEB1 and Sp1.** *J Biochem* 1993, **114**:605-609.  
This article shows that BTEB1 and Sp1 have similar DNA-binding affinities and can compete for DNA binding.
  31. Hagen G, Muller S, Beato M, Suske G: **Cloning by recognition site screening of two novel GT box binding proteins: a family of Sp1 related genes.** *Nucleic Acids Res* 1992, **20**:5519-5525.  
Identification of Sp3 and Sp4.
  32. Turner J, Crossley M: **Basic Kruppel-like factor functions within a network of interacting haematopoietic transcription factors.** *Int J Biochem Cell Biol* 1999, **31**:1169-1174.  
A review discussing the functional properties of KLF3.
  33. Zhang W, Shields JM, Kazuhiro S, Fujii-Kuriyama Y, Yang VW: **The gut-enriched Kruppel-like factor suppresses the activity of the CYPIA1 promoter in an Sp1-dependent fashion.** *J Biol Chem* 1998, **273**:17917-17925.  
This study shows that GKLF can repress the CYPIA1 gene promoter by competing with Sp1.
  34. Kaczynski JA, Conley AA, Fernandez Zapico M, Delgado SM, Zhang J-S, Urrutia R: **Functional analysis of basic transcription element (BTE)-binding protein (BTEB) 3 and BTEB4, a novel Sp1-like protein, reveals a subfamily of transcriptional repressors for the BTE site of the cytochrome P450IA1 gene promoter.** *Biochem J* 2002, **366**:873-882.  
This study shows that KLF13 and KLF16 repress the CYPIA1 gene promoter by competing with Sp1.
  35. Kingsley C, Winoto A: **Cloning of GT box-binding proteins: a novel Sp1 multigene family regulating T-cell receptor gene expression.** *Mol Cell Biol* 1992, **12**:4251-4261.

- This study reports the cloning and identification of Sp2 and Sp3.
36. Ryu S, Zhou S, Ladurner AG, Tjian R: **The transcriptional cofactor complex CRSP is required for activity of the enhancer-binding protein Sp1.** *Nature* 1999, **397**:446-450.  
Identification of the Sp1 coactivator complex CRSP.
  37. Cook T, Gebelein B, Belal M, Mesa K, Urrutia R: **Three conserved transcriptional repressor domains are a defining feature of the TIEG subfamily of Sp1-like zinc finger proteins.** *J Biol Chem* 1999, **274**:29500-29504.  
This study describes the repression domains of the TIEG proteins, KLF10 and KLF11.
  38. Zhang J-S, Moncrieffe MC, Kaczynski J, Ellenrieder V, Prendergast FG, Urrutia R: **A conserved alpha-helical motif mediates the interaction of Sp1-like transcriptional repressors with the corepressor mSin3A.** *Mol Cell Biol* 2001, **21**:5041-5049.  
The conserved SID domains of Sp1-like repressors is described.
  39. Asano H, Li SX, Stamatoyannopoulos G: **FKLF, a novel Kruppel-like factor that activates human embryonic and fetal beta-like globin genes.** *Mol Cell Biol* 1999, **19**:3571-3579.  
KLF11 is shown to be an activator of globin genes.
  40. Asano H, Li XS, Stamatoyannopoulos G: **FKLF-2: a novel Kruppel-like transcriptional factor that activates globin and other erythroid lineage genes.** *Blood* 2000, **95**:3578-3584.  
This study describes KLF13 as an activator of globin genes.
  41. Imataka H, Sogawa K, Yasumoto K, Kikuchi Y, Sasano K, Kobayashi A, Hayami M, Fujii-Kuriyama Y: **Two regulatory proteins that bind to the basic transcription element (BTE), a GC box sequence in the promoter region of the rat P-450IA1 gene.** *EMBO J* 1992, **11**:3663-3671.  
Identification of KLF9, a putative inhibitor of the CYP1A1 gene promoter.
  42. Kobayashi A, Sogawa K, Imataka H, Fujii-Kuriyama Y: **Analysis of functional domains of a GC box-binding protein, BTEB.** *J Biochem* 1995, **117**:91-95.  
This study describes the activation domains of KLF9.
  43. Majello B, De Luca P, Lania L: **Sp3 is a bifunctional transcription regulator with modular independent activation and repression domains.** *J Biol Chem* 1997, **272**:4021-4026.  
The transcriptional activation and repression properties of Sp3 are described.
  44. Gill G, Pascal E, Tseng ZH, Tjian R: **A glutamine-rich hydrophobic patch in transcription factor Sp1 contacts the dTAFII110 component of the Drosophila TFIID complex and mediates transcriptional activation.** *Proc Natl Acad Sci USA* 1994, **91**:192-196.  
This study describes the interaction of the TAFII110 protein with the glutamine-rich activation domains of Sp1.
  45. van Vliet J, Turner J, Crossley M: **Human Kruppel-like factor 8: a CACCC-box binding protein that associates with CtBP and represses transcription.** *Nucleic Acids Res* 2000, **28**:1955-1962.  
Identification of KLF8.
  46. Ellenrieder V, Zhang J-S, Kaczynski J, Urrutia R: **Signaling disrupts mSin3A binding to the Mad1-like Sin3-interacting domain of TIEG2, an Sp1-like repressor.** *EMBO J* 2002, **21**:2451-2460.  
Analysis of the regulation of KLF11 SID function by signaling.
  47. Nuez B, Michalovich D, Bygrave A, Ploemacher R, Grosveld F: **Defective haematopoiesis in fetal liver resulting from inactivation of the EKLF gene.** *Nature* 1995, **375**:316-318.  
Using EKLF knockout mice, this study and [48] describe that EKLF is essential for the final steps of erythropoiesis.
  48. Perkins AC, Sharpe AH, Orkin SH: **Lethal beta-thalassaemia in mice lacking the erythroid CACCC-transcription factor EKLF.** *Nature* 1995, **375**:318-322.  
See [47].
  49. Kuo CT, Veselits ML, Leiden JM: **LKLF: a transcriptional regulator of single-positive T cell quiescence and survival.** *Science* 1997, **277**:1986-1990.  
KLF2 knockout mice demonstrate that LKLF is required for the quiescence and viability of T cells.
  50. Kumar AP, Butler AP: **Enhanced Sp1 DNA-binding activity in murine keratinocyte cell lines and epidermal tumors.** *Cancer Lett* 1999, **137**:159-165.  
This study shows that increased levels of Sp1 and enhanced Sp1 DNA-binding activity are correlated with epidermal tumor progression.
  51. Foster KW, Frost A, R., McKie-Bell P, Lin CY, Engler JA, Grizzle WE, Ruppert JM: **Increase of GKLf messenger RNA and protein expression during progression of breast cancer.** *Cancer Res* 2000, **60**:6488-6495.  
This study and [52,53] show that GKLf expression is altered during tumor progression.
  52. Foster KW, Ren S, Louro ID, Lobo-Ruppert SM, McKie-Bell P, Grizzle WE, Hayes MR, Broker TR, Chow LT, Ruppert JM: **Oncogene expression cloning by retroviral transduction of adenovirus E1A-immortalized rat kidney RK3E cells: transformation of a host with epithelial features by c-MYC and the zinc finger protein GKLf.** *Cell Growth Differ* 1999, **10**:423-434.  
See [51].
  53. Adam PJ, Regan C, P., Hautmann MB, Owens GK: **Positive- and negative acting kruppel-like transcription factors bind a transforming growth factor beta control element required for expression of the smooth muscle cell differentiation marker SM22alpha in vivo.** *J Biol Chem* 2000, **275**:37798-37806.  
See [51].
  54. Narla G, Heath KE, Reeves HL, Li D, Giono LE, Kimmelman AC, Glucksmann MJ, Narla J, Eng FJ, Chan AM, et al.: **KLF6, a candidate tumor suppressor gene mutated in prostate cancer.** *Science* 2001, **294**:2563-2566.  
This study describes KLF6 as a potential tumor suppressor gene for prostate cancer.
  55. Song A, Chen Y, Thamatrakoln K, Storm T, Krensky A: **RFLAT-1: a new zinc finger transcription factor that activates RANTES gene expression in T lymphocytes.** *Immunity* 1999, **10**:93-103.  
Identification of KLF11 as an activator of the RANTES promoter.
  56. Martin K, Cooper W, Metcalfe J, Kemp P: **Mouse BTEB3, a new member of the basic transcription element binding protein (BTEB) family, activates transcription from GC-rich minimal promoter regions.** *Biochem J* 2000, **345**:529-533.  
Identification of mouse KLF11 as a transcriptional activator of the SV40 promoter.
  57. **National Center for Biotechnology Information - the human genome**  
[<http://www.ncbi.nlm.nih.gov/genome/guide/human/>]  
Human genome resources at NCBI.
  58. Klevit RE: **Recognition of DNA by Cys<sub>2</sub>His<sub>2</sub> zinc fingers.** *Science* 1991, **253**:1367-1393.  
This paper describes how Cys<sub>2</sub>His<sub>2</sub> zinc finger bind DNA in a sequence-specific manner.