

**AUTHOR CORRECTION**

**Open Access**



# Author Correction: The senescent methylome and its relationship with cancer, ageing and germline genetic variation in humans

Robert Lowe<sup>1</sup>, Marita G. Overhoff<sup>1</sup>, Sreeram V. Ramagopalan<sup>1</sup>, James C. Garbe<sup>2</sup>, James Koh<sup>3</sup>, Martha R. Stampfer<sup>2</sup>, David H. Beach<sup>1</sup>, Vardhman K. Rakyan<sup>1\*</sup> and Cleo L. Bishop<sup>1\*</sup>

The original article can be found online at <https://doi.org/10.1186/s13059-015-0748-4>.

\*Correspondence:  
v.rakyan@qmul.ac.uk;  
c.l.bishop@qmul.ac.uk

<sup>1</sup>The Blizard Institute, Barts and The London School of Medicine and Dentistry, Queen Mary University of London, 4 Newark Street, London E1 2AT, UK

<sup>2</sup>Life Science Division, Lawrence Berkeley National Laboratory, Berkeley, CA 94720, USA

<sup>3</sup>Division of Surgical Sciences, Department of Surgery, Duke University Medical School, Durham, NC 27710, USA

Author Correction: *Genome Biol* 16, 194 (2015)  
<https://doi.org/10.1186/s13059-015-0748-4>

Following publication of the original article [1], the authors reported two errors in Fig. 1B and Fig. 2B.

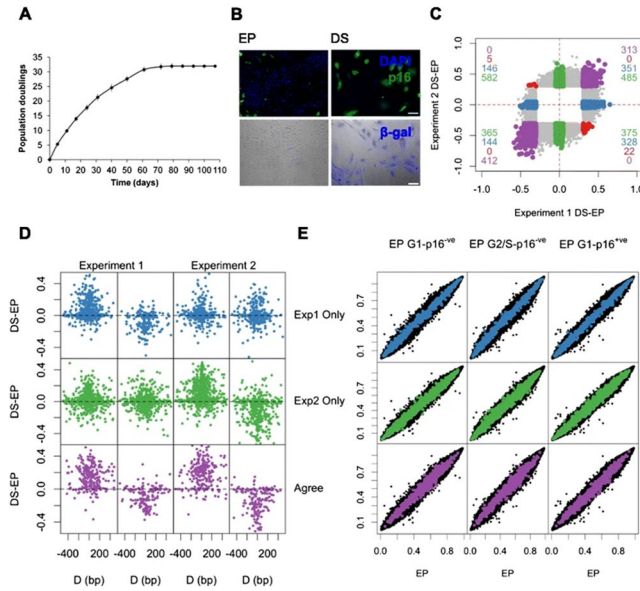
1. The two EP + siGLO and DS + siGLO brightfield/ $\beta$ -gal images from Fig. 2A were accidentally duplicated in Fig. 1B. The images in Fig. 2A are correct.

The images in Fig. 1B are replaced with representative images of untransfected EP and DS cells. The incorrect and the correct figure are given below.

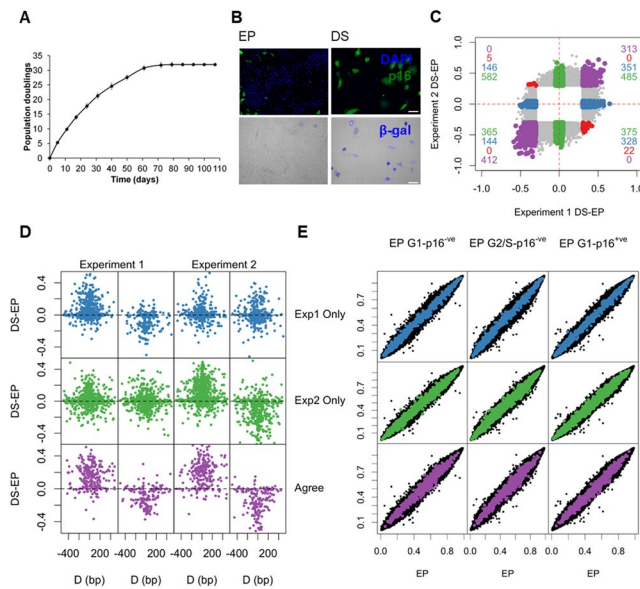


© The Author(s) 2024. **Open Access** This article is licensed under a Creative Commons Attribution 4.0 International License, which permits use, sharing, adaptation, distribution and reproduction in any medium or format, as long as you give appropriate credit to the original author(s) and the source, provide a link to the Creative Commons licence, and indicate if changes were made. The images or other third party material in this article are included in the article's Creative Commons licence, unless indicated otherwise in a credit line to the material. If material is not included in the article's Creative Commons licence and your intended use is not permitted by statutory regulation or exceeds the permitted use, you will need to obtain permission directly from the copyright holder. To view a copy of this licence, visit <http://creativecommons.org/licenses/by/4.0/>. The Creative Commons Public Domain Dedication waiver (<http://creativecommons.org/publicdomain/zero/1.0/>) applies to the data made available in this article, unless otherwise stated in a credit line to the data.

The incorrect Fig. 1:



The correct Fig. 1:

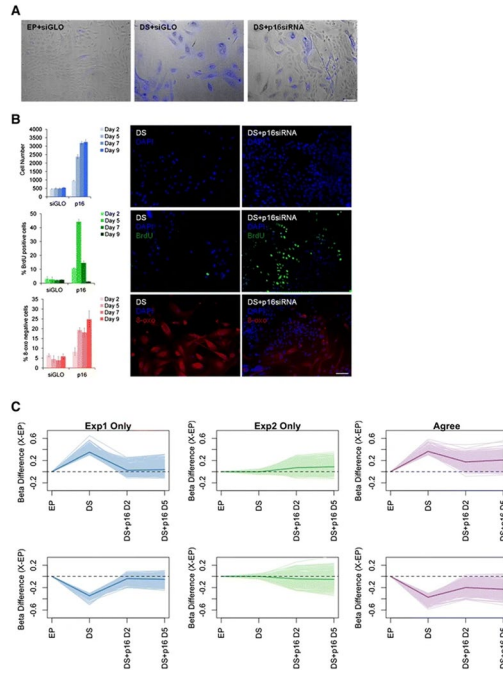


The replacement of these images does not change any of the other data in this figure, nor the conclusion of this figure.

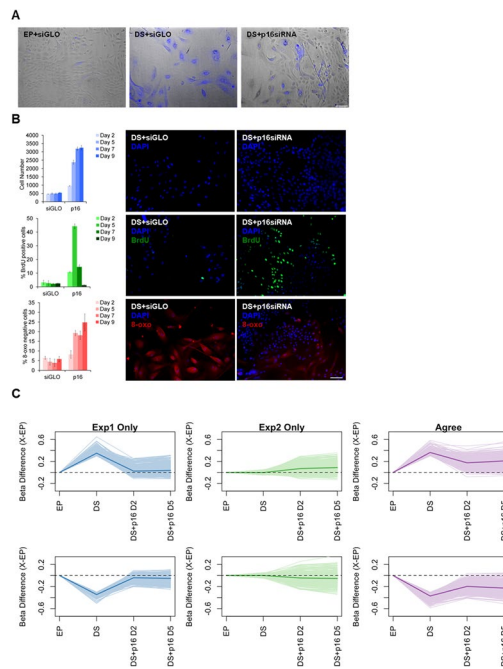
2. The authors also noticed that the panels in Fig. 2B labelled with “DS” were incorrectly labelled. The bar charts and figure legend correctly state that these images are “DS + siGLO” images. These panels are now relabelled as “DS + siGLO”.

This proposed relabelling does not change any of the other data in this figure, nor the conclusion of Fig. 2B. The incorrect and the correct figure are given below.

The incorrect Fig. 2:



The correct Fig. 2:



In both instances, these errors do not change any data associated with these figures, nor do they change the conclusions of the corresponding figures and the paper.

Published online: 10 June 2024

**Reference**

1. Lowe R, Overhoff MG, Ramagopalan SV, et al. The senescent methylome and its relationship with cancer, ageing and germline genetic variation in humans. *Genome Biol.* 2015;16:194. <https://doi.org/10.1186/s13059-015-0748-4>.