

**METHOD**

**Open Access**

# GISTIC2.0 facilitates sensitive and confident localization of the targets of focal somatic copy-number alteration in human cancers

Craig H Mermel<sup>1,2,3,4</sup>, Steven E Schumacher<sup>1,2,3,4</sup>, Barbara Hill<sup>1</sup>, Matthew L Meyerson<sup>1,2,3,4</sup>, Rameen Beroukhi<sup>1,2,3,4\*</sup> and Gad Getz<sup>1\*</sup>

## Abstract

We describe methods with enhanced power and specificity to identify genes targeted by somatic copy-number alterations (SCNAs) that drive cancer growth. By separating SCNA profiles into underlying arm-level and focal alterations, we improve the estimation of background rates for each category. We additionally describe a probabilistic method for defining the boundaries of selected-for SCNA regions with user-defined confidence. Here we detail this revised computational approach, GISTIC2.0, and validate its performance in real and simulated datasets.

## Background

Cancer forms through the stepwise acquisition of somatic genetic alterations, including point mutations, copy-number changes, and fusion events, that affect the function of critical genes regulating cellular growth and survival [1]. The identification of oncogenes and tumor suppressor genes being targeted by these alterations has greatly accelerated progress in both the understanding of cancer pathogenesis and the identification of novel therapeutic vulnerabilities [2]. Genes targeted by somatic copy-number alterations (SCNAs), in particular, play central roles in oncogenesis and cancer therapy [3]. Dramatic improvements in both array and sequencing platforms have enabled increasingly high-resolution characterization of the SCNAs present in thousands of cancer genomes [4-6].

However, the discovery of new cancer genes being targeted by SCNAs is complicated by two fundamental challenges. First, somatic alterations are acquired at random during each cell division, only some of which ('driver' alterations) promote cancer development [7]. Selectively neutral or weakly deleterious 'passenger' alterations may nonetheless become fixed whenever a

subclone carrying such alterations acquires selectively beneficial mutations that promote clonal dominance [8]. Second, SCNAs may simultaneously affect up to thousands of genes, but the selective benefits of driver alterations are likely to be mediated by only one or a few of these genes. For these reasons, additional analysis and experimentation is required to distinguish the drivers from the passengers, and to identify the genes they are likely to target.

A common approach to identifying drivers is to study large collections of cancer samples, on the notion that regions containing driver events should be altered at higher frequencies than regions containing only passengers [4,6,7,9-14]. For example, we developed an algorithm, GISTIC (Genomic Identification of Significant Targets in Cancer) [15], that identifies likely driver SCNAs by evaluating the frequency and amplitude of observed events. GISTIC has been applied to multiple cancer types, including glioblastoma [10,15], lung adenocarcinoma [16], melanoma [17], colorectal carcinoma [18], hepatocellular carcinoma [19], ovarian carcinoma [20], medulloblastoma [21], and lung and esophageal squamous carcinoma [22], and has helped identify several new targets of amplifications (including *NKX2-1* [16], *CDK8* [18], *VEGFA* [19], *SOX2* [22], and *MCL1* and *BCL2L1* [4]) and deletions (*EHMT1* [21]). Several

\* Correspondence: Rameen\_Beroukhi@dfci.harvard.edu;  
gadgetz@broadinstitute.org

<sup>1</sup>Cancer Program, The Broad Institute of MIT and Harvard, 7 Cambridge Center, Cambridge, MA 02142, USA

Full list of author information is available at the end of the article

additional algorithms for identifying likely driver SCNAs have also been described [23-25] (reviewed in [26]).

Yet, several critical challenges have not yet been adequately addressed by any of the existing copy-number analysis tools. For example, we and others have shown that the abundance of SCNAs in human cancers varies according to their size, with chromosome-arm length SCNAs occurring much more frequently than SCNAs of slightly larger or smaller size [4,27]. Therefore, analysis methods need to model complex cancer genomes that contain a mixture of SCNA types occurring at distinct background rates. Existing copy-number methods have also used *ad hoc* heuristics to define the genomic regions likely to harbor true cancer gene targets. The inability of these methods to provide *a priori* statistical

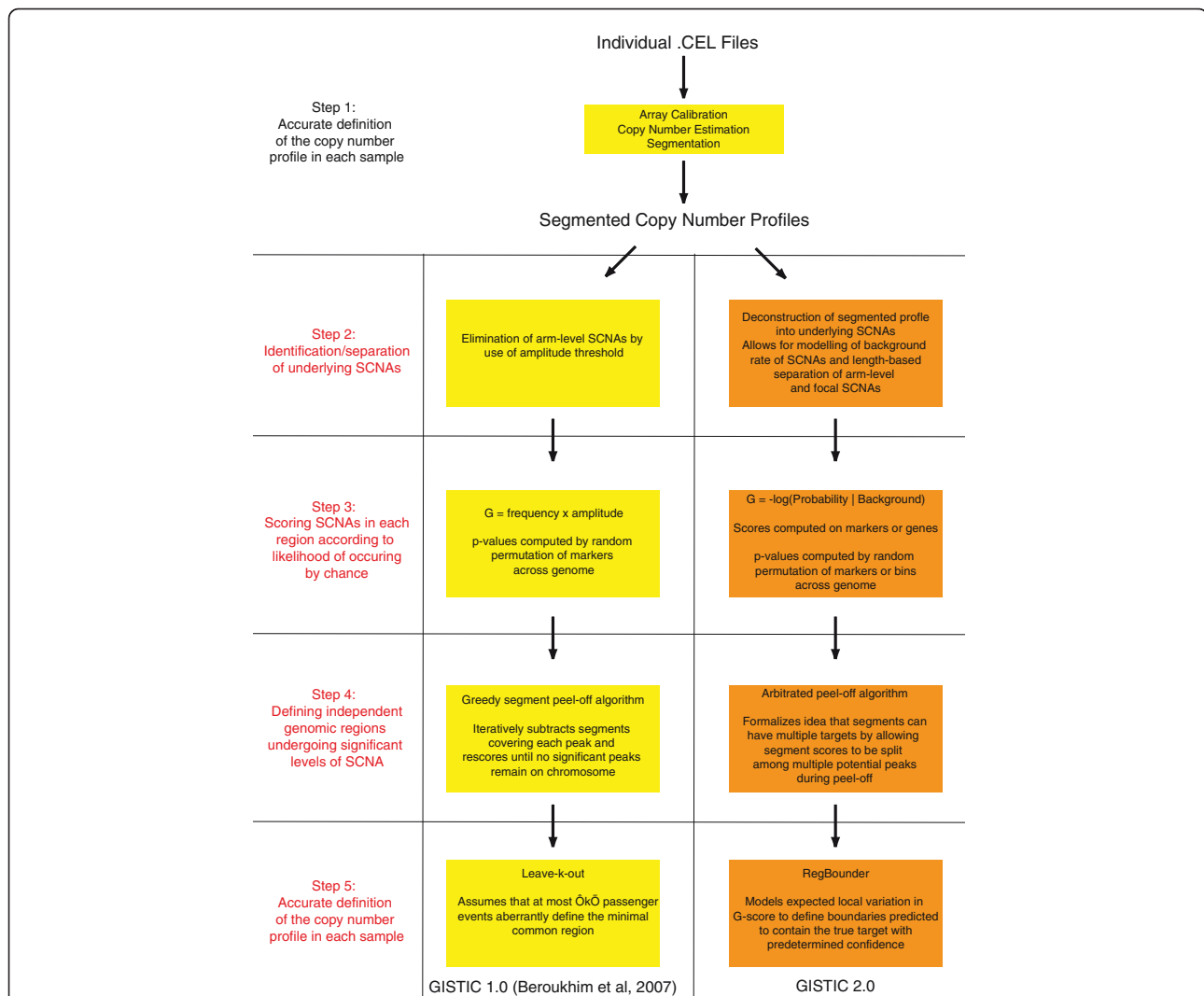
confidence has been a major limitation in interpreting copy-number analyses, an important problem as end-users typically use these results to prioritize candidate genes for time-consuming validation experiments.

Here we describe several methodological improvements to address these challenges, and validate the performance of the revised algorithms in both real and simulated datasets. We have incorporated these changes into a revised GISTIC pipeline, termed GISTIC 2.0.

## Results and Discussion

### Overview of copy-number analysis pipeline

Cancer copy-number analyses can be divided into five discrete steps (Figure 1): 1) accurately defining the copy-number profile of each cancer sample; 2)



**Figure 1 Schematic overview of the copy-number analysis framework.** High-level overview of our cancer copy-number analysis framework, highlighting specific differences between the original GISTIC algorithm [15] and the GISTIC 2.0 pipeline described in this manuscript. The first step, accurate identification of the copy-number profile in each sample, is common to GISTIC and GISTIC2.0.

identifying the SCNAs that most likely gave rise to these overall profiles and estimating their background rates of formation; 3) scoring the SCNAs in each region according to their likelihood of occurring by chance; 4) defining the independent genomic regions undergoing statistically significant levels of SCNA; and 5) identifying the likely gene target(s) of each significantly altered region. Figure 1 depicts a schematic overview of this process, highlighting the specific methodological improvements we will address in the present manuscript.

The first step, accurately defining the copy-number profile of each cancer sample, has been addressed by multiple previous studies [28-35] and is not discussed in detail here. We assume that segmented copy-number profiles have been obtained for all samples and all germline copy-number variations (CNVs) have been removed, yielding profiles of somatic events. The following sections describe improvements to steps 2 to 5. We evaluate these improvements on a test set of 178 glioblastoma multiforme (GBM) cancer DNAs hybridized to the Affymetrix Single Nucleotide Polymorphism (SNP) 6.0 array as part of The Cancer Genome Atlas (TCGA) project [10] (the 'TCGA GBM set'), and on simulated data. Full technical details for each step are described in the Supplementary Methods (Additional file 1).

#### Deconstruction of segmented copy-number profiles into underlying SCNAs

Segmented copy number profiles represent the summed outcome of all the SCNAs that occurred during cancer development. Accurate modeling of the background rate of copy-number alteration requires analysis of the individual SCNAs. However, because SCNAs may overlap, it is impossible to directly infer the underlying events from the final segmented copy-number profile alone. Given certain assumptions about SCNA background rates, however, it is possible to estimate the likelihood of any given set of candidate SCNAs so as to select the most likely one.

We have developed an algorithm ('Ziggurat Deconstruction' (ZD)) that deconstructs each segmented copy-number profile into its most likely set of underlying SCNAs (see Supplementary Methods in Additional file 1 and Supplementary Figure S1 in Additional file 2). ZD is an iterative optimization algorithm that alternatively estimates a background model for SCNA formation and then utilizes this model to determine the most likely deconstruction of each copy-number profile. Its output is a catalog of the individual SCNAs in each cancer sample, each with an assigned length and amplitude, that sum to generate the original segmented copy profile. We assume that most of these SCNAs are

passengers, so that their distribution reflects, to a first approximation, the operation of the 'background' mutation process (see Supplementary Figure S2 in Additional file 3).

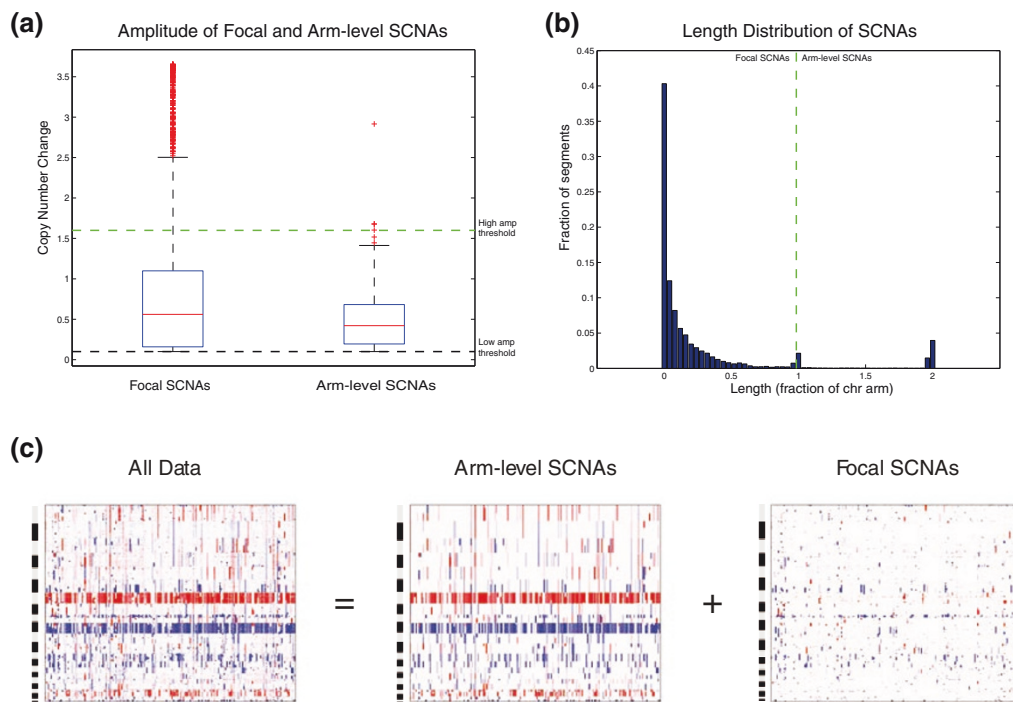
#### Length-based separation of focal and arm-level SCNAs

A major advantage of the ZD method is its ability to separate arm-level and focal SCNAs explicitly by length. Prior studies have attempted to exclude arm-level SCNAs by setting high amplitude thresholds [10,16] because, in contrast to focal SCNAs, few arm-level SCNAs reach high amplitude (Figure 2a). However, this approach suffers from at least two undesirable consequences: first, low- to moderate-amplitude focal copy-number events are eliminated from the analysis, reducing sensitivity to identify positively selected regions; and second, the amplitude threshold is left as a free parameter, allowing for potential over-fitting of the analysis to a desired result.

We have previously shown that SCNA frequencies across cancers of diverse tissue origin are inversely proportional to SCNA lengths, with the striking exception of SCNAs exactly the length of a chromosome arm or whole chromosome (which are very frequent) [4]. This trend is preserved in the TCGA GBM samples (Figure 2b). This reproducible distribution provides a natural basis for classifying events as 'arm-level' and 'focal' based purely on length. Such length-based filtering of events allows for the computational reconstruction of 'arm-level' and 'focal' representations of the cancer genome (Figure 2c) and enables the inclusion of low- to moderate-amplitude focal copy-number events in the final analysis.

To determine the benefits of this approach, we ran the original 'GISTIC 1.0' algorithm on the TCGA GBM set using three different thresholding approaches (Figure 3; Supplementary Table S1 in Additional file 4): 1) a low amplitude threshold ( $\log_2$  ratio of  $\pm 0.1$ ) that only eliminates low-level artifactual segments; 2) a high amplitude threshold ( $\log_2$  ratio of 0.848 and -0.737 for amplifications/deletions) used previously [16] to eliminate arm-level events; and 3) the low amplitude threshold but also removing all SCNAs occupying more than 98% of a chromosome arm, leaving only the focal events.

Filtering out arm-level events through use of either amplitude or length thresholds greatly increased the sensitivity of GISTIC for detecting focal amplifications and deletions (Figure 3; Supplementary Table S1 in Additional file 4). While entire chromosomes were scored as significant using only a low amplitude threshold, including gain of chromosome 7 and loss of chromosome 10 (Figure 3a), a number of recurrent focal alterations were missed, including amplifications surrounding *CDK6*, *CCND2*, and *HMGA2*. These



**Figure 2 Computational separation of arm-level and focal SCNAs.** (a) Boxplot showing the distribution of copy-number changes for amplified focal (length < 98% of a chromosome arm) and arm-level (length > 98% of a chromosome arm) SCNAs across 178 GBM profiles from TCGA. The black dotted line denotes a typical low-level amplitude threshold used to eliminate artifactual SCNAs, while the green dotted line denotes a typical high-level amplitude threshold used in previous version of GISTIC to eliminate arm-level SCNAs. (b) Histogram showing the frequency of observing SCNAs of a given length across 178 GBM samples. The high frequency of events occupying exactly one chromosome arm led us to distinguish between focal and arm-level SCNAs. (c) Heatmaps showing the total segmented copy-number profile of the TCGA GBM set (leftmost panel), and the results of computationally separating these samples into arm-level profiles (middle panel) and focal profiles (rightmost panel) by summing arm-level and focal SCNAs. In each heatmap, the chromosomes are arranged vertically from top to bottom and samples are arranged from left to right. Red and blue represent gain and loss, respectively.

alterations were detected using either the high amplitude (Figure 3b) or the focal length filters (Figure 3c).

The benefits of length-based filtering result from the inclusion of low- to moderate-amplitude focal events. Amplification of *PIK3CA* and *AKT1* and deletion of *WWOX* are detected using length-based filtering, but are not significant under the high amplitude filter (compare Figure 3b and 3c). Moreover, the length-based analysis identified significant SCNAs detected in neither of the amplitude-based analyses, including amplifications of *MLL2* and deletions of *CDKN1B* and *NF1*.

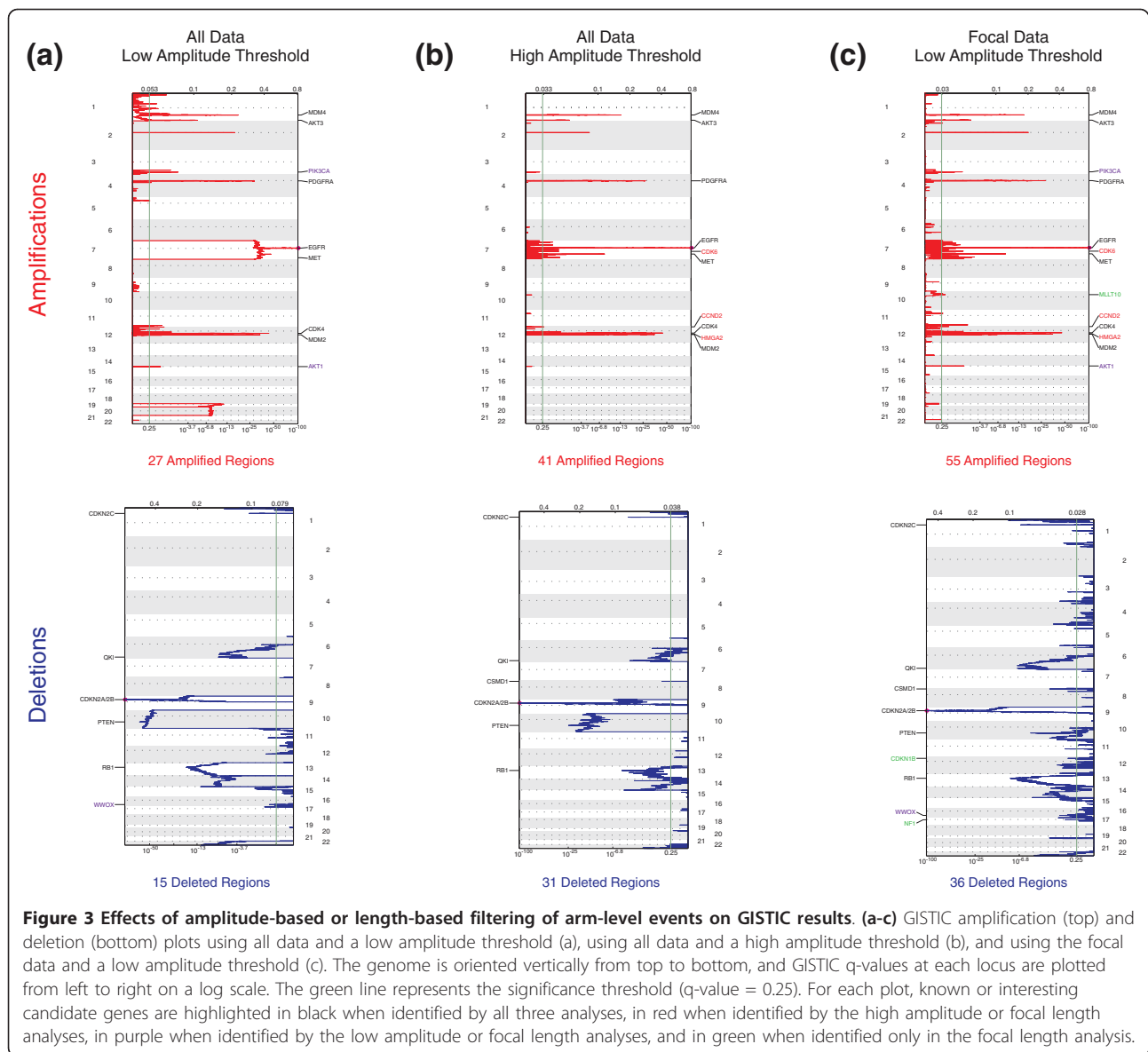
No known GBM target gene was detected in either of the amplitude-based analyses that was not also detected by the length-based analysis. These results suggest that length-based filtering of arm-level events greatly improves the sensitivity of GISTIC to identify relevant regions of focal SCNA.

#### Probabilistic scoring of SCNAs

We set out to define a scoring framework for SCNAs that more accurately reflects the background rates of

alteration. Ideally, we aim to score each region of the genome according to the probability with which the observed set of SCNAs would occur by chance alone. Scores using this framework have a clear interpretation: the higher the score assigned to a region, the less likely that the SCNAs in that region are observed entirely by chance, and the more likely that they underwent positive selection.

The probability of observing a single SCNA of given length and amplitude can be approximated by the frequency of occurrence of events of similar length and amplitude across the entire dataset (as in Supplementary Figure S2 in Additional file 3). However, since cancer genomes do contain drivers, this procedure is likely to overestimate the probability of observing SCNAs under the null model. Specifically, driver events tend to be shorter in length and of higher amplitude than passengers and therefore constitute the majority of events in their length/amplitude neighborhood (Supplementary Figure S3 in Additional file 5).



To avoid biasing our background model, we set out to fit the log-probability distribution of SCNAs to a functional form that would be insensitive to the presence of driver events in the data (Supplementary Methods in Additional file 1). We made use of a large collection of 3,131 cancer samples run on the Affymetrix 250K StyI SNP Array [4] plus several hundred additional samples run on the Affymetrix SNP6.0 Array (data not shown). At the level of resolution provided by these arrays, the probability of observing a focal SCNA at a given locus under the background model is roughly independent of length. As a result, the functional form for the log-probability distribution is similar to the original GISTIC G-score definition ( $G = \text{Frequency} \times \text{Amplitude}$ ), with the notable exception being that the new score is

proportional to the amplitude in copy-number space rather than log-copy-number space.

Although this functional form was empirically derived from a large collection of samples run on two different array-based platforms, it does lead to increased sensitivity to differences in dynamic range across platforms as well as differential saturation characteristics of probes within the same array platform. To avoid this problem, we routinely cap the segmented copy-number data at a level representing the signal intensity above which most probes start to saturate (Supplementary Methods in Additional file 1). This ensures that we are using data that originate from the linear regime of the probes' response curves and therefore are more comparable across platforms.

As with GISTIC 1.0, we obtain  $P$ -values for each marker by comparing the score at each locus to a background score distribution generated by random permutation of the marker locations in each sample (Supplementary Methods in Additional file 1). This procedure controls for sample-specific variations in the rate of copy-number alteration. We correct the resulting  $P$ -values for multiple-hypothesis testing using the Benjamini-Hochberg false discovery rate method [36].

#### Alternative gene-level scoring for tumor suppressors with non-overlapping deletions

Some genes are affected by non-overlapping deletions, either on different alleles in one sample or across multiple samples. For such genes, a marker-based score does not weight the presence of all deletions affecting that gene, despite the fact that these events are likely to have similarly deleterious effects on gene function. We have developed a modified scoring and permutation procedure, termed GeneGISTIC, that scores genes rather than markers (Supplementary Methods in Additional file 1). In each sample, we assign each gene the minimal copy number of any marker contained within that gene, and then sum across all samples to compute the gene score. Because genes covering more markers are more likely to achieve a more extreme value by chance, the permutation procedure is adjusted to account for gene size; the score for a gene covering  $n$  markers is compared against a size-specific null distribution generated by computing minima overall running windows of size  $n$  in each sample and then randomly permuting these minimal values across the genome.

To determine the effect of gene-based scoring of deletions, we compared the results of gene-based and marker-based scoring on the TCGA GBM set (holding all other parameters equal). As expected, GeneGISTIC ranks known tumor suppressor genes higher and is more sensitive for genes subject to non-overlapping deletions (Supplementary Table S2 in Additional file 6). For example, *RBI* was ranked 5th out of 39 regions using gene-based scoring ( $q$ -value =  $2.6e-10$ ) but only 13th out of 38 using marker-based scoring ( $q$ -value = 0.0013), and *CDKN1B* was ranked 26th using gene-based scoring ( $q$ -value = 0.08) compared to 38th using marker-based scoring ( $q$ -value = 0.19). *NF1* was focally deleted in 12 of the 178 GBM samples (6.7%), and these deletions were frequently non-overlapping (Supplementary Figure S4a in Additional file 7). As a result, *NF1* was scored just over or just under the significance threshold using the marker-based score, depending on the parameters used. By contrast, *NF1* was robustly identified using gene-based scoring across all parameter combinations (Supplementary Table S2 in Additional file 6 and data not shown).

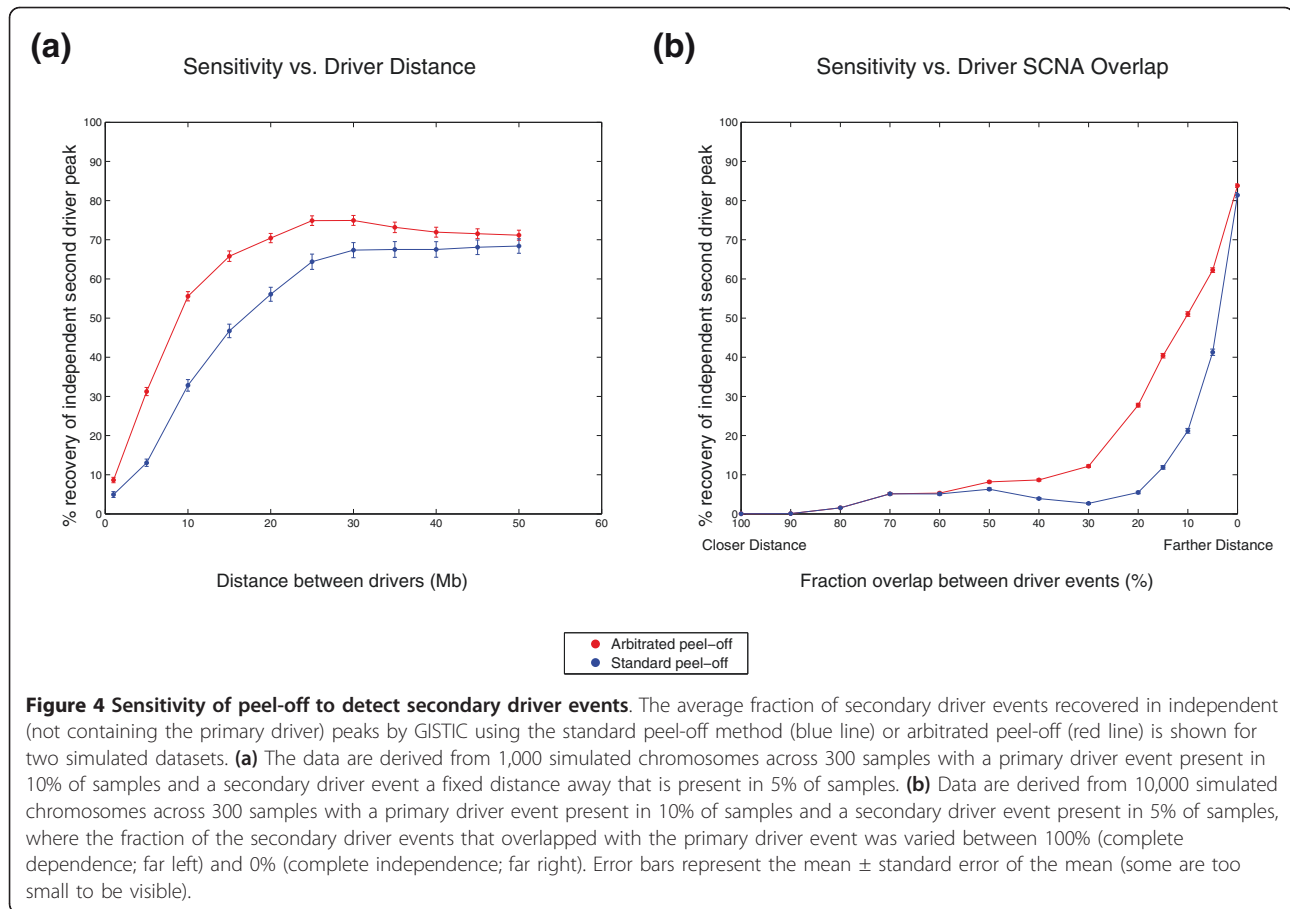
However, because this scoring method does not score regions of the genome that are not in annotated genes, it could underweight or completely miss deletions occurring in non-genic regions. For example, in our GBM samples, gene-based scoring did not identify a region just outside of *PCHD9* on chr13q21.3 that scored as highly significant ( $q$ -value =  $4.4e-9$ ) using the standard marker-based score (Supplementary Figure S4b in Additional file 7). While many non-genic deletions may in fact represent technical artifacts or rare germline events, some may be functionally relevant.

**Identification of independent significantly altered regions**  
Individual SCNAs, and indeed significantly amplified or deleted regions of the genome, may extend over more than one oncogene or tumor suppressor gene. Other significant regions may contain no oncogenes or tumor suppressor genes, but achieve apparent significance due to their proximity to a target gene. Thus, an additional step is required after genome-wide scoring to identify independently significant regions.

GISTIC 1.0 solves this problem through the use of an iterative 'peel-off' algorithm, which greedily assigns all SCNAs to the maximal peak on each chromosome, removes them from the data, and rescores until no remaining region crosses the significance threshold. This approach reduces the power to identify secondary peaks that are close to previously identified significant regions (Figure 4a). However, since it is possible for individual SCNAs to affect multiple driver regions, a less greedy approach might identify additional peaks without significantly increasing the false discovery rate.

We have, therefore, modified the method to allow SCNAs to contribute to more than one peak ('arbitrated peel-off'). We first greedily assign the entirety of an SCNA's score to the most significant peak it covers. In subsequent steps, however, we allow scores of previously assigned segments to be redistributed before deciding whether a putative region is significant (Supplementary Methods in Additional file 1). Like the original algorithm, the process terminates when no region has an adjusted score that exceeds the significance threshold. A similar modification of GISTIC has recently been proposed [37].

Arbitrated peel-off is more sensitive than the original algorithm (Figure 4a; Supplementary Table S3 in Additional file 8). We generated 10,000 simulated datasets each consisting of 300 samples, with each chromosome containing a primary driver event in 10% of the samples and a secondary driver event in 5% of the samples. We analyzed the sensitivity of standard and arbitrated peel-off to detect the secondary peak as we varied the percentage of secondary driver events that overlapped the primary driver peak between 0% and 100% (Supplementary



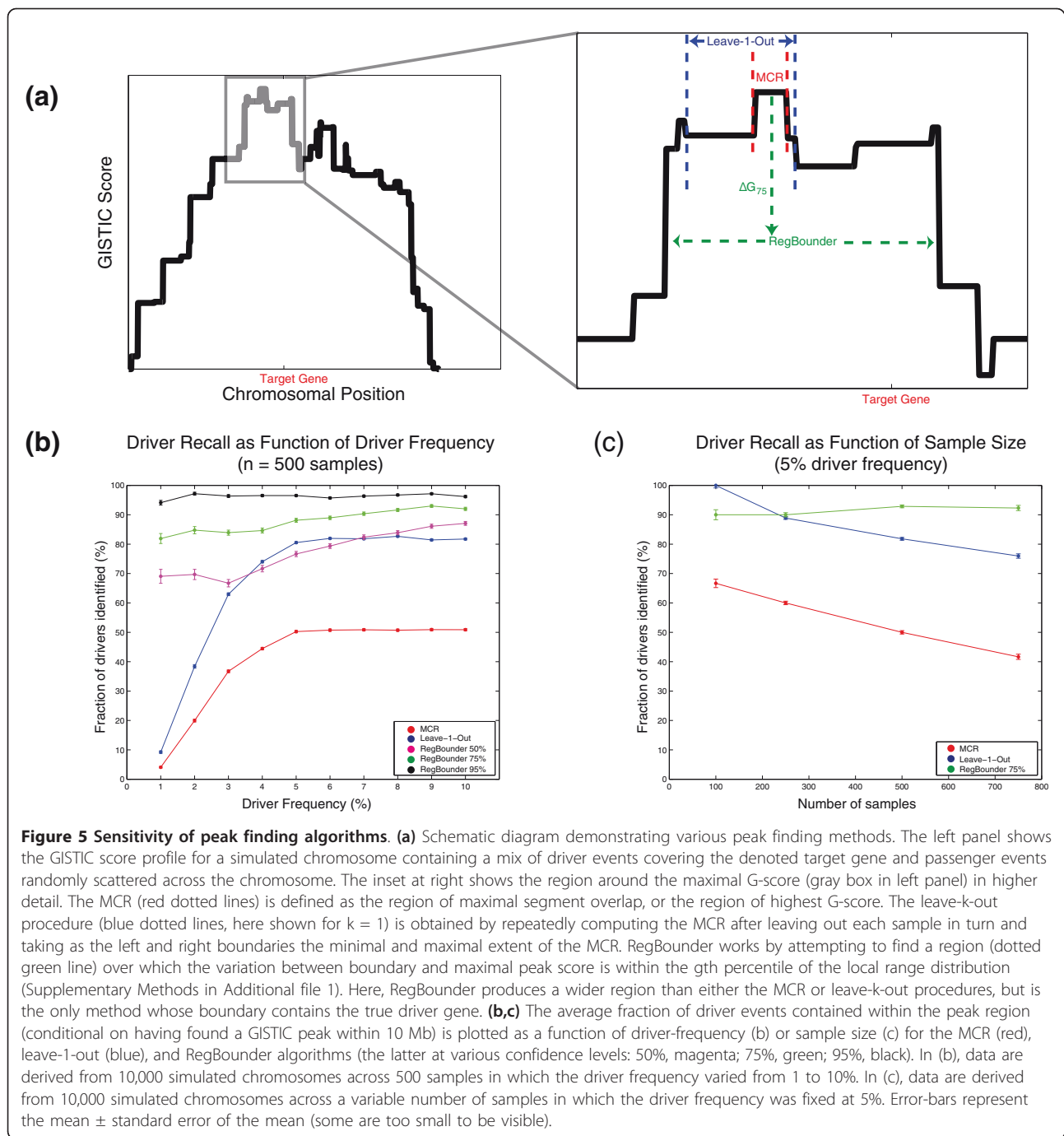
Methods in Additional file 1). At 0% overlap, the two methods were nearly equally sensitive at identifying the secondary peak. However, arbitrated peel-off was vastly more sensitive than standard peel-off as we increased the rate of overlap between primary and secondary peaks from 5 to 50% (Figure 4b), recovering an average of 2.4 times (range 1.2 to 3.8) more secondary peaks. Over 80% of the novel peaks identified by arbitrated peel-off corresponded to an actual simulated driver peak, demonstrating that the increased sensitivity is accompanied by high specificity.

The primary and secondary peaks tend to merge when the overlap is above 50%, obscuring any appreciable difference between the two methods (Supplementary Figure S5 in Additional file 9). Indeed, neither method was capable of independently identifying the secondary peak once the percent overlap rose above 80%. These simulations demonstrate both the superior sensitivity of arbitrated peel-off as well as the challenge of identifying neighboring drivers.

#### Localizing target genes for each significantly altered region

The final step in the GISTIC pipeline is to determine the region that is most likely to contain the gene or

genes being targeted for each independently significant region of SCNA (the 'peak region'). The standard approach is to focus on the minimal common region (MCR) of overlap (Figure 5a), the region that is altered in the greatest number of samples and therefore would be expected to be the most likely to contain the target genes. However, one or more passenger SCNAs adjacent to, but not overlapping, the target gene can result in an MCR that does not include the true target. This is a frequent occurrence, especially when the frequency of the driver event is low (< 5%; Figure 5b). An alternative method (utilized by the GISTIC 1.0) is to apply a heuristic 'leave-k-out' procedure to define the boundaries of each peak region (Figure 5a) [15]. This procedure assumes that up to  $k$  passenger SCNAs (typically,  $k = 1$ ) may aberrantly define each boundary of the peak region. While the 'leave-k-out' procedure correctly identifies the target gene more often than the MCR (Figure 5b), it suffers from the potential for overfitting introduced by the free parameter ' $k$ '. Moreover, the accuracy of 'leave-k-out' varies depending on the number of samples and the frequency of the event under question. For fixed  $k$ , the sensitivity of 'leave-k-out' increases for increasing driver frequency (Figure 5b) and decreases for increasing sample size (Figure 5c).



We developed a novel approach (termed ‘RegBouncer’) to define the peak region boundaries in such a way that target genes would be included at a pre-determined confidence level, regardless of the event frequency or number of samples being studied (Figure 5a; Supplementary Methods in Additional file 1). RegBouncer models the expected random fluctuation in G-scores within any given window size and uses this distribution to define a confidence region likely to contain the true

driver at least  $\gamma\%$  of the time, where  $\gamma$  is a desired confidence level. Unlike the MCR and ‘leave-k-out’ procedures, which are highly dependent on one or a few segment boundaries to define each region, RegBouncer is designed to be relatively robust to random errors (either due to technical artifacts or passenger segments) in boundary assignment. When applied to real data, RegBouncer captures known driver genes more effectively than ‘leave-1-out’ (and MCR) in regions with



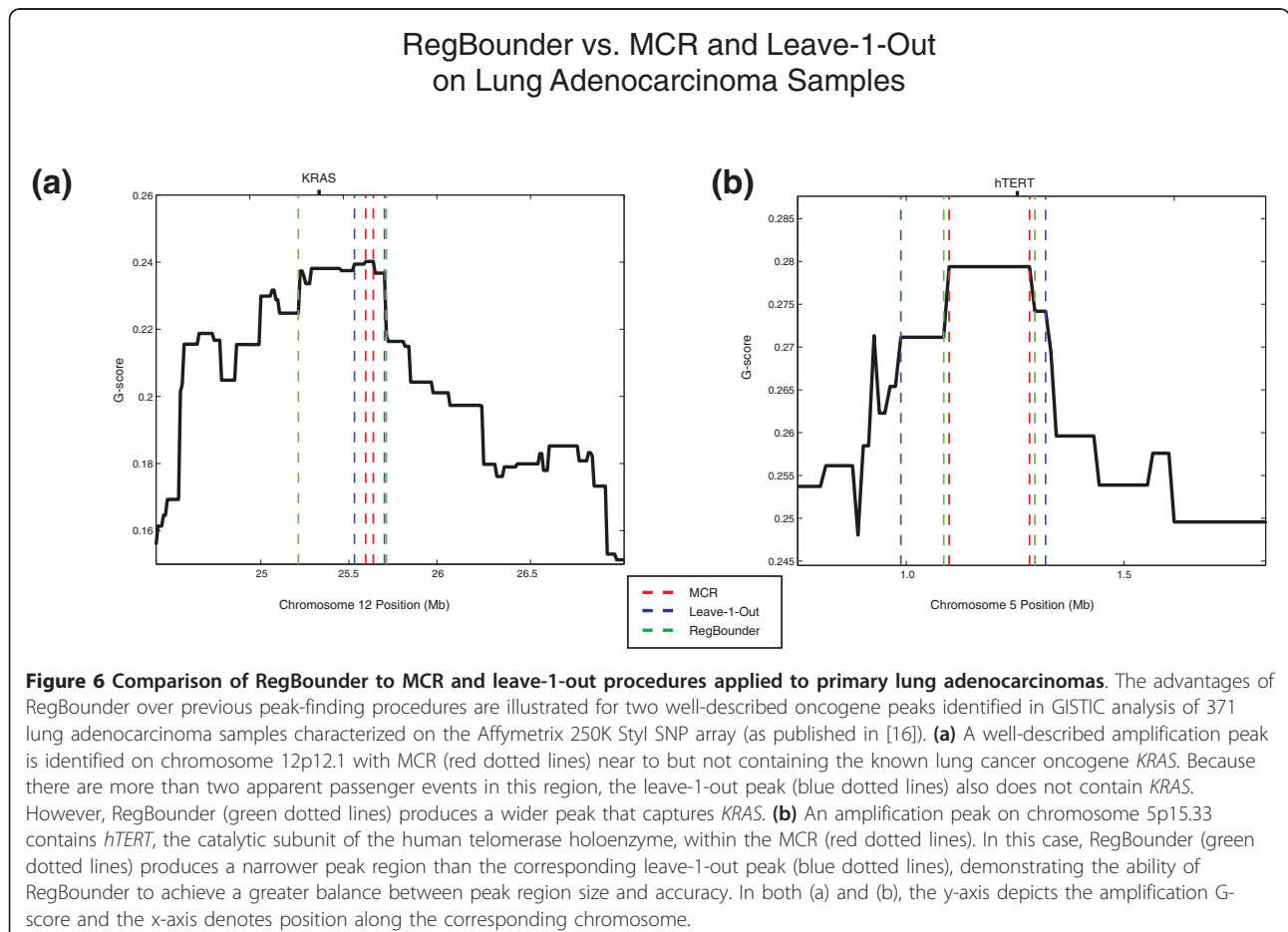
increased local noise (Figure 6a) and yet is capable of producing narrower boundaries than 'leave-1-out' in regions with little noise (Figure 6b).

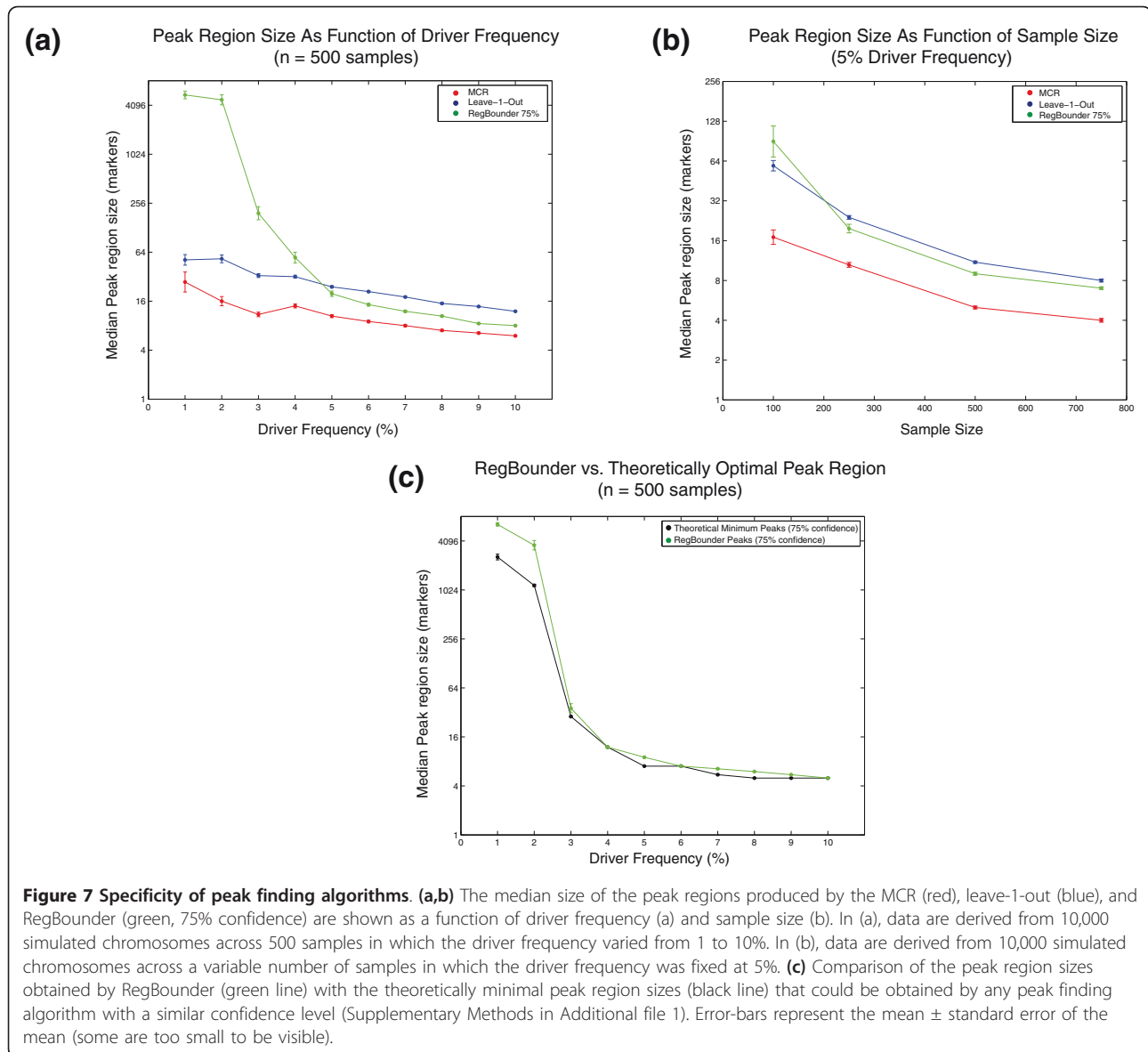
In simulated datasets, the performance of RegBouncer was consistent across a wide range of driver SCNA frequencies (Figure 5b) and sample sizes (Figure 5c), and indeed controlled the probability of containing the driver. RegBouncer captured the true driver gene in an average of 72%, 85%, and 95% of driver regions of varying frequency when run with a desired confidence level ( $\gamma$ ) of 50, 75, and 95%, respectively. For no combination of sample-size, driver frequency, and  $\gamma$  did the average accuracy of RegBouncer drop below  $\gamma$ .

RegBouncer also demonstrated a more optimal trade-off between peak region sensitivity (the likelihood of including the target gene) and specificity (the number of additional genes included) than the MCR or 'leave-k-out' approaches. The average size of the peak regions decreases with increasing driver frequency (Figure 7a) and sample size (Figure 7b) for all three approaches. However, RegBouncer is more sensitive to these variables than the other methods, so that RegBouncer peak regions (at 75% confidence) can range from an average

of 90 times larger than the 'leave-k-out' peak regions (for datasets with few total driver events, in which the target gene locations are truly uncertain) to 37% smaller than the 'leave-k-out' procedure (for datasets with many total driver events). Thus, the increased confidence of RegBouncer can even be achieved while producing narrower regions than the 'leave-k-out' procedure.

RegBouncer is also more consistent across datasets than the MCR and 'leave-k-out' methods. We randomly split the TCGA GBM set into two groups and compared the peak regions produced by RegBouncer and the MCR and 'leave-k-out' procedures on each. Considering only those peaks that were identified by GISTIC in both datasets, only 23% of the MCRs and 31% of the 'leave-k-out' peak regions overlap between the two datasets, reflecting the low confidence with which these regions are assigned. By contrast, a majority (53%) of the RegBouncer peak regions (at 75% confidence) overlapped, as expected ( $0.75^2 = 56\%$ ). This increased overlap came with only a modestly increased median size of the RegBouncer peak regions (370 kb) compared to the leave-k-out (163 kb) or MCR (115 kb) peak regions.





RegBouncer regions are, on average, only 19% larger than the theoretically minimal peak region size for a wide range of driver frequencies (Figure 7c) and confidence levels (Supplementary Figure S6 in Additional file 10). These theoretically minimal peak region sizes were derived from the distribution of distances between the target gene and the MCR in our simulations (Supplementary Methods in Additional file 1). Our simulations reveal that RegBouncer is capable of producing smaller peak regions than the ‘leave-k-out’ approach while simultaneously achieving greater target gene recall (compare Figures 5b and 7a; ‘RegBouncer 75%’ versus ‘leave-1-out’, for driver frequencies > 5%). Thus, RegBouncer is a robust algorithm for peak region boundary determination that demonstrates a more

optimal trade-off between statistical confidence and peak resolution than previous heuristic approaches.

#### Source code and module availability

The MATLAB source code for the GISTIC2.0 pipeline, along with a precompiled unix executable, will be available for download at [38]. In addition, the entire pipeline can be accessed through the GenePattern analysis portal at [39].

In addition to including all the methodological improvements described in this manuscript, the GISTIC2.0 source code has been designed to make efficient use of memory in storing segmented copy-number data (Supplementary Methods in Additional file 1). This improved memory efficiency should allow users with

limited computational resources to run GISTIC2.0 on typical size datasets, and will be increasingly important for all users as the density of copy-number measuring platforms continues its rapid rise.

## Conclusions

We describe a number of analytical improvements to the standard copy-number analysis workflow that increase the sensitivity and specificity with which driver genes may be localized. We also demonstrate the utility of each of these changes using both simulated and real cancer copy-number datasets. While these changes have been specifically implemented in GISTIC 2.0, the challenges we describe apply broadly to the general task of identifying significantly aberrant regions of SCNA in cancer, and we anticipate that the approaches we have described can be adapted to other copy-number analysis workflows.

The procedure we outline enables data-driven estimation of the background rates of SCNA and how these rates vary with features of the SCNA, such as length or amplitude. The specific trends we have observed are likely to depend on the resolution and characteristics of the measuring platform used to generate our datasets (the Affymetrix 250K StyI and SNP6.0 arrays). As more cancer samples are characterized using higher-resolution array and sequencing platforms, new trends are likely to emerge. Further improvements would account for such trends, possibly taking into account additional features that may determine SCNA background rates, such as the presence of known fragile sites of the genome or the surrounding sequence context. Indeed, we and others have recently shown that somatic deletions frequently occur in genes with large genomic footprints [4,6], suggesting the existence of a contextual bias in the rate of somatic deletion that is presently unaccounted for in our background mutation model. Our probabilistic scoring framework allows such trends to be accounted for once the background model has been specified.

For the significant SCNAs, the background rate estimates also enable the delineation of regions likely to contain the target genes at predetermined confidence. RegBouncer, the algorithm we devised to assign these boundaries, is more robust than either MCR- or 'leave-k-out'-based methods. RegBouncer achieves this higher sensitivity by producing wider peak regions when the number of informative segments at a driver locus is small, but we find that RegBouncer performs well compared to the theoretically optimal performance. However, RegBouncer's underlying assumptions may not always be satisfied, including the assumption that each peak region contains a single dominant target gene and the expectation that copy-number breakpoints are independently distributed around the driver locus. To the extent that

these assumptions are violated, RegBouncer's performance may be worse than our simulations suggest.

While the arbitrated peel-off approach described in this manuscript reflects a more sensitive way of identifying independently targeted regions of amplification and deletion than our prior approach, it is still an imperfect attempt to decipher the complexity of cancer copy-number alterations. One major limitation stems from the fact that array-based measurements map SCNAs onto a linear reference genome. However, many SCNAs are preceded by rearrangement events that juxtapose genomic regions separated by great physical distance in the germline (even different chromosomes) [40,41]. This level of detailed structural information is impossible to infer from probe-level copy-number estimates but can be obtained by sequencing paired-end libraries [13]. Indeed, we anticipate that copy-number information derived from shotgun sequencing of cancer samples will become more common as sequencing costs continue to plummet [42]. Tools for estimating and segmenting copy-number values from sequencing coverage data already exist [5], and these segmented copy-number profiles can, with only slight modification, be run through the GISTIC 2.0 workflow. Fully exploiting the level of detailed information provided by these technologies will, however, require a significant extension of the background mutation model to include the probability of random genomic rearrangements, as well as the ability to perform significance analysis, segment peel-off, and peak finding across non-contiguous regions of the reference genome. The data provided by these sequencing efforts should lead to new insights into the cellular and molecular processes underlying SCNA generation in different cancer types, and will allow for the development of vastly more detailed and accurate models of the background mutation rate of such events during tumor development.

## Materials and methods

Full methods are available in the Supplementary Materials (Additional file 1) [43-46].

## Additional material

**Additional file 1: Supplementary Methods.** Supplementary Methods contains the full description of the GISTIC2.0 method and details of the specific analyses presented in this manuscript.

### Additional file 2: Supplementary Figure S1: Ziggurat

**Deconstruction.** (a) A hypothetical segmented chromosome (green line) is deconstructed with the simplified procedure used by Ziggurat Deconstruction (ZD) to initialize background SCNA rates. Dotted red and blue lines denote the length and amplitude of amplified and deleted SCNAs, respectively, while solid red and blue lines denote the result of merging the SCNA with the closest adjacent segment. (b) The same hypothetical segmented chromosome (green line) is deconstructed using the more flexible procedure of subsequent rounds of ZD. Here, the ZD is performed with respect to up to two basal levels (dotted magenta lines)

that are fit to the data, allowing for amplified and deleted SCNAs to be superimposed.

**Additional file 3: Supplementary Figure S2: distribution of SCNA length and amplitudes.** Two-dimensional histogram showing the frequency (z-axis) of copy number events as a function of length (x-axis) and amplitude (y-axis). Frequency is plotted on a log-scale to facilitate visualization of very low frequency copy number events.

**Additional file 4: Supplementary Table S1: comparison of amplitude and length-based filtering of SCNAs.** Supplementary Table 1 compares the GISTIC results obtained using low and high amplitude thresholds with those obtained using a focal length threshold on 178 GBM samples.

**Additional file 5: Supplementary Figure S3: distribution of driver length and amplitudes.** Driver SCNAs are typically of shorter length and higher amplitude than random passenger SCNAs. **(a,b)** Here we show the cumulative frequency distribution of SCNA amplitudes (a) and lengths (b) for SCNAs covering significantly amplified regions identified by GISTIC ('Driver SCNAs', red line) or by a similar number of randomly chosen non-driver regions ('Random SCNAs', blue line).

**Additional file 6: Supplementary Table S2: comparison of GeneGISTIC and standard GISTIC deletions analysis.** Supplementary Table 2 compares the GISTIC results obtained using the standard GISTIC deletions analysis with those obtained using GeneGISTIC on 178 GBM samples.

**Additional file 7: Supplementary Figure S4: GeneGISTIC versus standard GISTIC.** **(a)** GeneGISTIC helps identify genes subject to non-overlapping deletion, such as *NF1*. The left panel shows the 12 samples with focal deletions affecting *NF1*, many of which do not overlap. As a result, the standard GISTIC marker score (blue line, right panel) has multiple local maxima over *NF1*. By contrast, the GeneGISTIC score counts all of these deletions as contributing to the *NF1* score, resulting in a score for *NF1* (red line, right panel) that is significantly greater than that assigned to any of the individual markers covering *NF1*. **(b)** GeneGISTIC does not score deletions occurring outside of genes. The left panel shows a region of focal deletion occurring just outside the *PCHD9* gene on chromosome 13. These deletions result in a peak in the markers deletion score (blue line, right panel) that is not detected by GeneGISTIC.

**Additional file 8: Supplementary Table S3: new peaks detected by arbitrated peel-off.** Supplementary Table 3 compares the GISTIC results obtained using the standard peel-off algorithm with those obtained using arbitrated peel-off on 178 GBM samples.

**Additional file 9: Supplementary Figure S5: total recovery of secondary driver peaks.** This figure shows the results from 10,000 simulations of 300 samples in which a primary driver event is present in 10% of samples and a secondary driver event is present in 5% of samples. In these simulations, we vary the fraction of overlap between driver events from 100% (total dependence) to 0% (total independence). Here we present to the total recovery of the secondary driver peak in GISTIC runs using arbitrated peel-off (left panel) or the standard peel-off (right panel). The red (left panel) or blue (right panel) lines show the fraction of secondary driver peaks identified in independent GISTIC peaks (that is, not containing the primary driver event), as is shown in Figure 4b. The black lines show the fraction of secondary driver peaks identified in dependent peaks (that is, a peak containing both the primary and secondary driver events), and the green lines show the total recall of secondary driver peaks (in any peak). Error-bars representing the mean  $\pm$  standard error of the mean are drawn, but may be smaller than the point used to represent the mean and hence not be visible.

**Additional file 10: Supplementary Figure S6: comparison of RegBounder to theoretically optimal peaks.** Comparison between the peak region sizes obtained by RegBounder (green line) with the theoretically minimal peak region sizes (black line) that could be obtained by a similarly confident peak finding algorithm (Supplementary Methods in Additional file 1) at 50% (left) and 95% (right) confidence. Error-bars representing the median  $\pm$  standard error of the mean are drawn, but may be smaller than the points used to represent the median and hence not be visible.

## Abbreviations

CNV: copy number variation; GBM: glioblastoma multiforme; GISTIC: Genomic Identification of Significant Targets in Cancer; MCR: minimal common region; SCNA: somatic copy number alteration; SNP: single nucleotide polymorphism; TCGA: The Cancer Genome Atlas; ZD: Ziggurat Deconstruction.

## Acknowledgements

This work was supported by a Genome Characterization Center Grant (U24CA143867) awarded as part of the NCI/NHGRI funded Cancer Genome Atlas (TCGA) project. CHM was supported by Medical Scientist Training Program (MSTP) Award Number T32GM07753 from the National Institute of General Medical Sciences. RB was supported by NIH K08CA122833, a V Foundation Scholarship, and the Doris Duke Charitable Foundation. The content is solely the responsibility of the authors and does not necessarily represent the official views of the National Institute of General Medical Sciences or the National Institutes of Health.

## Author details

<sup>1</sup>Cancer Program, The Broad Institute of MIT and Harvard, 7 Cambridge Center, Cambridge, MA 02142, USA. <sup>2</sup>Department of Medical Oncology, Dana Farber Cancer Institute, 44 Binney Street, Boston, MA 02115, USA. <sup>3</sup>Department of Cancer Biology, Dana Farber Cancer Institute, 44 Binney Street, Boston, MA 02115, USA. <sup>4</sup>The Center for Cancer Genome Discovery, Dana Farber Cancer Institute, 44 Binney Street, Boston, MA 02115, USA.

## Authors' contributions

RB and GG developed and coded the original GISTIC algorithm. CHM, SES, RB, and GG developed and coded the algorithmic modifications contained in GISTIC 2.0. CHM, MM, RB, and GG conceived and designed the present study. CHM, SES, and BH debugged and packaged the GISTIC 2.0 software release. CHM, MM, RB, and GG wrote the manuscript. All authors read and approved the final manuscript.

Received: 18 August 2010 Revised: 14 February 2011

Accepted: 28 April 2011 Published: 28 April 2011

## References

1. Hanahan D, Weinberg RA: **The hallmarks of cancer.** *Cell* 2000, **100**:57-70.
2. Stratton MR, Campbell PJ, Futreal PA: **The cancer genome.** *Nature* 2009, **458**:719-724.
3. Santarius T, Shipley J, Brewer D, Stratton MR, Cooper CS: **A census of amplified and overexpressed human cancer genes.** *Nat Rev Cancer* 2010, **10**:59-64.
4. Beroukhi R, Mermel C, Porter D, Wei G, Raychaudhuri S, Donovan J, Barretina J, Boehm J, Dobson J, Urashima M: **The landscape of somatic copy-number alteration across human cancers.** *Nature* 2010, **463**:899-905.
5. Chiang D, Getz G, Jaffe D, O'Kelly M, Zhao X: **High-resolution mapping of copy-number alterations with massively parallel sequencing.** *Nat Methods* 2009, **6**:99-103.
6. Bignell GR, Greenman CD, Davies H, Butler AP, Edkins S, Andrews JM, Buck G, Chen L, Beare D, Latimer C, Widaa S, Hinton J, Fahey C, Fu B, Swamy S, Dalgliesh GL, Teh BT, Deloukas P, Yang F, Campbell PJ, Futreal PA, Stratton MR: **Signatures of mutation and selection in the cancer genome.** *Nature* 2010, **463**:893-898.
7. Greenman C, Stephens P, Smith R, Dalgliesh GL, Hunter C, Bignell G, Davies H, Teague J, Butler A, Stevens C, Edkins S, O'Meara S, Vastrik I, Schmidt EE, Avis T, Barthorpe S, Bhamra G, Buck G, Choudhury B, Clements J, Cole J, Dicks E, Forbes S, Gray K, Halliday K, Harrison R, Hills K, Hinton J, Jenkinson A, Jones D, et al: **Patterns of somatic mutation in human cancer genomes.** *Nature* 2007, **446**:153-158.
8. Merlo LM, Pepper JW, Reid BJ, Maley CC: **Cancer as an evolutionary and ecological process.** *Nat Rev Cancer* 2006, **6**:924-935.
9. Network CGAR: **Comprehensive genomic characterization defines human glioblastoma genes and core pathways.** *Nature* 2008, **455**:1061-1068.
10. McLendon R, Friedman A, Bigner D, Van Meir EG, Brat DJ, Mastrogiannis GM, Olson JJ, Mikkelsen T, Lehman N, Aldape K, Yung WK, Bogler O, Weinstein JN, VandenBerg S, Berger M, Prados M, Muzny D, Morgan M, Scherer S, Sabo A, Nazareth L, Lewis L, Hall O, Zhu Y, Ren Y, Alvi O, Yao J, Hawes A, Jhangiani S, Fowler G, et al: **Comprehensive**

- genomic characterization defines human glioblastoma genes and core pathways. *Nature* 2008, **455**:1061-1068.
11. Pleasance E, Cheetham R, Stephens P, McBride D, Humphray S, Greenman C, Varella I, Lin M, Ordóñez G, Bignell G: **A comprehensive catalogue of somatic mutations from a human cancer genome.** *Nature* 2009, **463**:191-196.
  12. Pleasance ED, Stephens PJ, O'Meara S, McBride DJ, Meynert A, Jones D, Lin ML, Beare D, Lau KW, Greenman C, Varella I, Nik-Zainal S, Davies HR, Ordóñez GR, Mudie LJ, Latimer C, Edkins S, Stebbings L, Chen L, Jia M, Leroy C, Marshall J, Menzies A, Butler A, Teague JW, Mangion J, Sun YA, McLaughlin SF, Peckham HE, Tsung EF, *et al*: **A small-cell lung cancer genome with complex signatures of tobacco exposure.** *Nature* 2010, **463**:184-190.
  13. Stephens PJ, McBride DJ, Lin ML, Varella I, Pleasance ED, Simpson JT, Stebbings LA, Leroy C, Edkins S, Mudie LJ, Greenman CD, Jia M, Latimer C, Teague JW, Lau KW, Burton J, Quail MA, Swerdlow H, Churher C, Natrajan R, Sieuwerts AM, Martens JW, Silver DP, Langerod A, Russnes HE, Foekens JA, Reis-Filho JS, van 't Veer L, Richardson AL, Borresen-Dale AL, *et al*: **Complex landscapes of somatic rearrangement in human breast cancer genomes.** *Nature* 2009, **462**:1005-1010.
  14. Sjoblom T, Jones S, Wood LD, Parsons DW, Lin J, Barber TD, Mandelker D, Leary RJ, Ptak J, Silliman N, Szabo S, Buckhaults P, Farrell C, Meeh P, Markowitz SD, Willis J, Dawson D, Willson JK, Gazdar AF, Hartigan J, Wu L, Liu C, Parmigiani G, Park BH, Bachman KE, Papadopoulos N, Vogelstein B, Kinzler KW, Velculescu VE: **The consensus coding sequences of human breast and colorectal cancers.** *Science* 2006, **314**:268-274.
  15. Beroukhi R, Getz G, Nghiemphu L, Barretina J, Hsueh T, Linhart D, Vivanco I, Lee JC, Huang JH, Alexander S, Du J, Kau T, Thomas RK, Shah K, Soto H, Perner S, Prensner J, Debiasi RM, Demicheli F, Hatton C, Rubin MA, Garraway LA, Nelson SF, Liao L, Mischel PS, Cloughesy TF, Meyerson M, Golub TA, Lander ES, Mellinghoff IK, *et al*: **Assessing the significance of chromosomal aberrations in cancer: methodology and application to glioma.** *Proc Natl Acad Sci USA* 2007, **104**:20007-20012.
  16. Weir BA, Woo MS, Getz G, Perner S, Ding L, Beroukhi R, Lin WM, Province MA, Kraja A, Johnson LA, Shah K, Sato M, Thomas RK, Barletta JA, Borecki IB, Broderick S, Chang AC, Chiang DY, Chirieac LR, Cho J, Fujii Y, Gazdar AF, Giordano T, Greulich H, Hanna M, Johnson BE, Kris MG, Lash A, Lin L, Lindeman N, *et al*: **Characterizing the cancer genome in lung adenocarcinoma.** *Nature* 2007, **450**:893-898.
  17. Lin WM, Baker AC, Beroukhi R, Winckler W, Feng W, Marmion JM, Laine E, Greulich H, Tseng H, Gates C, Hodi FS, Dranoff G, Sellers WR, Thomas RK, Meyerson M, Golub TR, Dummer R, Herlyn M, Getz G, Garraway LA: **Modeling genomic diversity and tumor dependency in malignant melanoma.** *Cancer Res* 2008, **68**:664-673.
  18. Firestein R, Bass AJ, Kim SY, Dunn IF, Silver SJ, Guney I, Freed E, Ligon AH, Vena N, Ogino S, Chheda MG, Tamayo P, Finn S, Shrestha Y, Boehm JS, Jain S, Bojarski E, Mermel C, Barretina J, Chan JA, Baselga J, Taberner J, Root DE, Fuchs CS, Loda M, Shivdasani RA, Meyerson M, Hahn WC: **CDK8 is a colorectal cancer oncogene that regulates beta-catenin activity.** *Nature* 2008, **455**:547-551.
  19. Chiang DY, Villanueva A, Hoshida Y, Peix J, Newell P, Minguez B, LeBlanc AC, Donovan DJ, Thung SN, Sole M, Tovar V, Alsinet C, Ramos AH, Barretina J, Roayaie S, Schwartz M, Waxman S, Bruix J, Mazzaferro V, Ligon AH, Najfeld V, Friedman SL, Sellers WR, Meyerson M, Llovet JM: **Focal gains of VEGFA and molecular classification of hepatocellular carcinoma.** *Cancer Res* 2008, **68**:6779-6788.
  20. Etemadmoghadam D, deFazio A, Beroukhi R, Mermel C, George J, Getz G, Tothill R, Okamoto A, Raeder MB, Harnett P, Lade S, Akslen LA, Tinker AV, Locandro B, Alsop K, Chiew YB, Traficante N, Fereday S, Johnson D, Fox S, Sellers W, Urashima M, Salvesen HB, Meyerson M, Bowtell D, Bowtell D, Chenevix-Trench G, Green A, Webb P, deFazio A, *et al*: **Integrated genome-wide DNA copy number and expression analysis identifies distinct mechanisms of primary chemoresistance in ovarian carcinomas.** *Clin Cancer Res* 2009, **15**:1417-1427.
  21. Northcott PA, Nakahara Y, Wu X, Feuk L, Ellison DW, Croul S, Mack S, Kongkham PN, Peacock J, Dubuc A, Ra Y-S, Zilberberg K, McLeod J, Scherer SW, Sunil Rao J, Eberhart CG, Grajkowska W, Gillespie Y, Lach B, Grundy R, Pollack IF, Hamilton RL, Van Meter T, Carlotti CG, Boop F, Bigner D, Gilbertson RJ, Rutka JT, Taylor MD: **Multiple recurrent genetic events converge on control of histone lysine methylation in medulloblastoma.** *Nat Genet* 2009, **41**:465-472.
  22. Bass AJ, Watanabe H, Mermel CH, Yu S, Perner S, Verhaak RG, Kim SY, Wardwell L, Tamayo P, Gat-Viks I, Ramos AH, Woo MS, Weir BA, Getz G, Beroukhi R, O'Kelly M, Dutt A, Rozenblatt-Rosen O, Dziunycz P, Komisarof J, Chirieac LR, Lafargue CJ, Scheble V, Wilbertz T, Ma C, Rao S, Nakagawa H, Stairs DB, Lin L, Giordano TJ, *et al*: **SOX2 is an amplified lineage-survival oncogene in lung and esophageal squamous cell carcinomas.** *Nat Genet* 2009, **41**:1238-1242.
  23. Diskin SJ, Eck T, Greshock J, Mosse YP, Naylor T, Stoekert CJ, Weber BL, Maris JM, Grant GR: **STAC: A method for testing the significance of DNA copy number aberrations across multiple array-CGH experiments.** *Genome Res* 2006, **16**:1149-1158.
  24. Guttman M, Mies C, Dudycz-Sulicz K, Diskin SJ, Baldwin DA, Stoekert CJ, Grant GR: **Assessing the significance of conserved genomic aberrations using high resolution genomic microarrays.** *PLoS Genet* 2007, **3**:e143.
  25. Taylor BS, Barretina J, Socci ND, Decarolis P, Ladanyi M, Meyerson M, Singer S, Sander C, Gibson G: **Functional copy-number alterations in cancer.** *PLoS ONE* 2008, **3**:e3179.
  26. Shah SP: **Computational methods for identification of recurrent copy number alteration patterns by array CGH.** *Cytogenet Genome Res* 2008, **123**:343-351.
  27. Leach NT, Rehder C, Jensen K, Holt S, Jackson-Cook C: **Human chromosomes with shorter telomeres and large heterochromatin regions have a higher frequency of acquired somatic cell aneuploidy.** *Mech Ageing Dev* 2004, **125**:563-573.
  28. Li C, Hung Wong W: **Model-based analysis of oligonucleotide arrays: model validation, design issues and standard error application.** *Genome Biol* 2001, **2**:RESEARCH0032.
  29. Li C, Wong WH: **Model-based analysis of oligonucleotide arrays: expression index computation and outlier detection.** *Proc Natl Acad Sci USA* 2001, **98**:31-36.
  30. Bolstad BM, Collin F, Simpson KM, Irizarry RA, Speed TP: **Experimental design and low-level analysis of microarray data.** *Int Rev Neurobiol* 2004, **60**:25-58.
  31. Baross A, Delaney AD, Li HI, Nayar T, Filibotte S, Qian H, Chan SY, Asano J, Ally A, Cao M, Birch P, Brown-John M, Fernandes N, Go A, Kennedy G, Langlois S, Eydoux P, Friedman JM, Marra MA: **Assessment of algorithms for high throughput detection of genomic copy number variation in oligonucleotide microarray data.** *BMC Bioinformatics* 2007, **8**:368.
  32. Hupé P, Stransky N, Thiery J-P, Radvanyi F, Barillot E: **Analysis of array CGH data: from signal ratio to gain and loss of DNA regions.** *Bioinformatics* 2004, **20**:3413-3422.
  33. Olshen AB, Venkatraman ES, Lucito R, Wigler M: **Circular binary segmentation for the analysis of array-based DNA copy number data.** *Biostatistics* 2004, **5**:557-572.
  34. Venkatraman ES, Olshen AB: **A faster circular binary segmentation algorithm for the analysis of array CGH data.** *Bioinformatics* 2007, **23**:657-663.
  35. Nilsson B, Johansson M, Al-Shahrour F, Carpenter AE, Ebert BL: **Ultrasome: efficient aberration caller for copy number studies of ultra-high resolution.** *Bioinformatics* 2009, **25**:1078-1079.
  36. Benjamini Y, Hochberg Y: **Controlling the false discovery rate: a practical and powerful approach to multiple testing.** *J R Stat Soc B (Methodological)* 1995, **57**:289-300.
  37. Sanchez-Garcia F, Akavia UD, Mozes E, Pe'er D: **JISTIC: identification of significant targets in cancer.** *BMC Bioinformatics* 2010, **11**:189.
  38. GISTIC 2 Manuscript and Software Download Page. [<http://www.broadinstitute.org/cancer/pub/GISTIC2>].
  39. GenePattern. [<http://www.broadinstitute.org/cancer/software/genepattern/>].
  40. Stephens PJ, Greenman CD, Fu B, Yang F, Bignell GR, Mudie LJ, Pleasance ED, Lau KW, Beare D, Stebbings LA, McLaren S, Lin ML, McBride DJ, Varella I, Nik-Zainal S, Leroy C, Jia M, Menzies A, Butler AP, Teague JW, Quail MA, Burton J, Swerdlow H, Carter NP, Morsberger LA, Iacobuzio-Donahue C, Follows GA, Green AR, Flanagan AM, Stratton MR, *et al*: **Massive genomic rearrangement acquired in a single catastrophic event during cancer development.** *Cell* 2011, **144**:27-40.
  41. Dahlback HS, Brandal P, Meling TR, Gorunova L, Scheie D, Heim S: **Genomic aberrations in 80 cases of primary glioblastoma multiforme: Pathogenetic heterogeneity and putative cytogenetic pathways.** *Genes Chromosomes Cancer* 2009, **48**:908-924.
  42. Metzker M: **Sequencing technologies - the next generation.** *Nat Rev Genet* 2009, **11**:31-46.

43. **The Cancer Genome Atlas Data Portal, GBM Publication.** [[http://tcga-data.nci.nih.gov/docs/publications/gbm\\_2008/](http://tcga-data.nci.nih.gov/docs/publications/gbm_2008/)].
44. McCarroll SA, Kuruwilla FG, Korn JM, Cawley S, Nemes J, Wysoker A, Shaperro MH, de Bakker PI, Maller JB, Kirby A, Elliott AL, Parkin M, Hubbell E, Webster T, Mei R, Veitch J, Collins PJ, Handsaker R, Lincoln S, Nizzari M, Blume J, Jones KW, Rava R, Daly MJ, Gabriel SB, Altshuler D: **Integrated detection and population-genetic analysis of SNPs and copy number variation.** *Nat Genet* 2008, **40**:1166-1174.
45. Schwarz G: **Estimating the dimension of a model.** *Ann Statist* 1978, **6**:461-464.
46. Holland AJ, Cleveland DW: **Boveri revisited: chromosomal instability, aneuploidy and tumorigenesis.** *Nat Rev Mol Cell Biol* 2009, **10**:478-487.

doi:10.1186/gb-2011-12-4-r41

**Cite this article as:** Mermel *et al.*: GISTIC2.0 facilitates sensitive and confident localization of the targets of focal somatic copy-number alteration in human cancers. *Genome Biology* 2011 **12**:R41.

**Submit your next manuscript to BioMed Central  
and take full advantage of:**

- Convenient online submission
- Thorough peer review
- No space constraints or color figure charges
- Immediate publication on acceptance
- Inclusion in PubMed, CAS, Scopus and Google Scholar
- Research which is freely available for redistribution

Submit your manuscript at  
[www.biomedcentral.com/submit](http://www.biomedcentral.com/submit)

